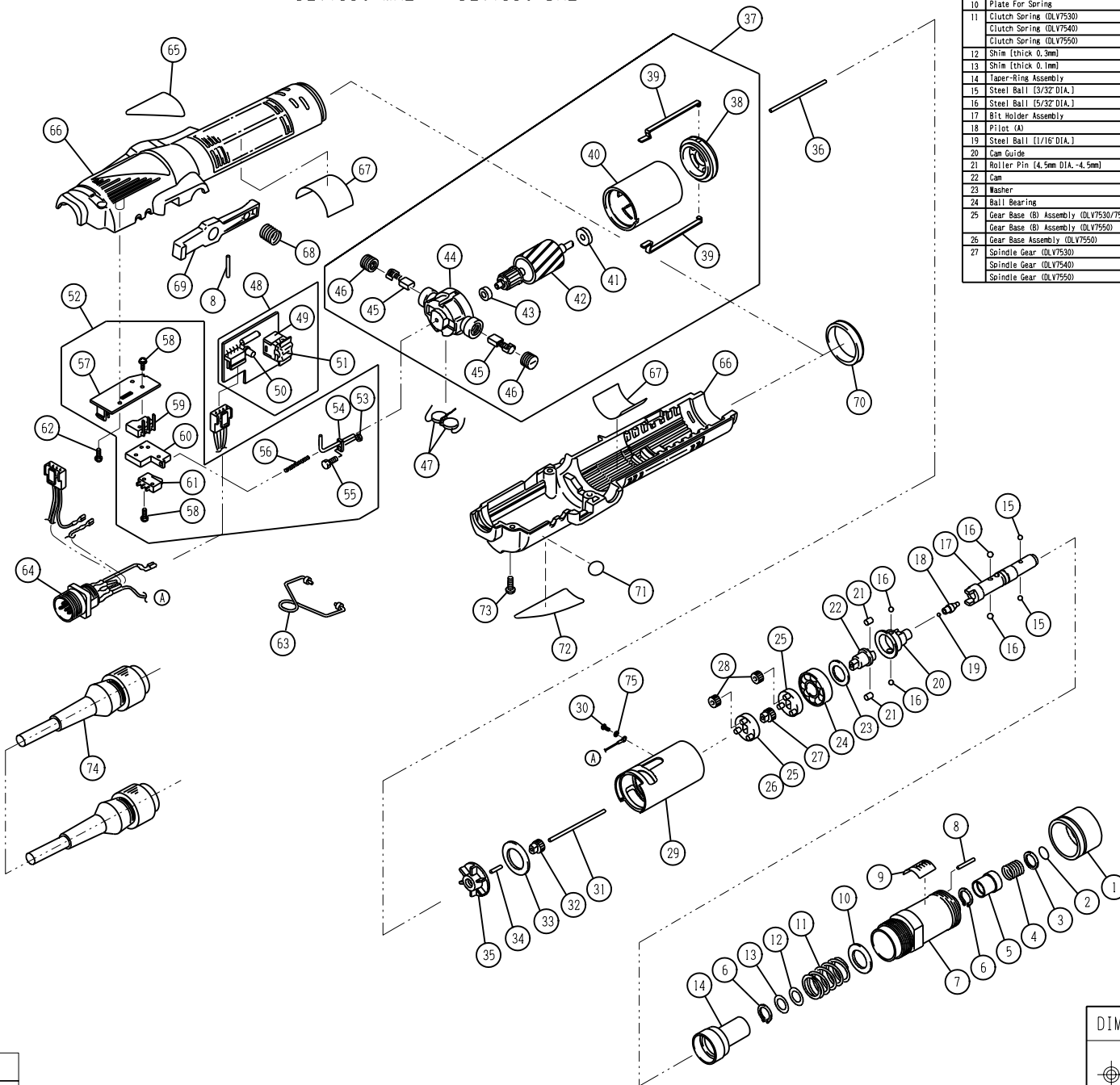




DLV7530-MKE △DLV7530-BKE
 DLV7540-MKE △DLV7540-BKE
 DLV7550-MKE △DLV7550-BKE



No.	Parts Name	Parts No.	Q'ty
1	Spring Adjusting Ring	TV00387	1
2	Stop Ring	TV00149	1
3	Holder Collar	TV00357	1
4	Holder Spring	TV00356	1
5	Holder Clamp	TV00355	1
6	Stop Ring	LP10494	2
7	Nose Nut Assembly	TV001829	1
8	Roller Pin (2mm DIA., -17.8mm)	TV00109	4
9	Scale Label	TV00391	1
10	Plate For Spring	TV00351	1
11	Clutch Spring (DLV7530)	TV004037	1
	Clutch Spring (DLV7540)	TV00402	1
	Clutch Spring (DLV7550)	TV00143	1
12	Shim (thick 0.3mm)	TV00279	lor2
13	Shim (thick 0.1mm)	TV00280	lor2
14	Tapet-Ring Assembly	TD01827	1
15	Steel Ball (3/32 DIA.)	CP20000	2
16	Steel Ball (5/32 DIA.)	CP01181	4
17	Bit Holder Assembly	TD01828	1
18	Pilot (A)	TV00352	1
19	Steel Ball (1/16 DIA.)	TP11155	1
20	Cam Guide	TV00346	1
21	Roller Pin (4.5mm DIA., -4.5mm)	TV00127	2
22	Cam	TV00347	1
23	Washer	TV00348	1
24	Ball Bearing	TP02715	1
25	Gear Base (B) Assembly (DLV7530/7540)	TD01830	2
	Gear Base (B) Assembly (DLV7550)		1
26	Gear Base Assembly (DLV7550)	TD01852	1
27	Spindle Gear (DLV7530)	TV00354	1
	Spindle Gear (DLV7540)	TV00404	1
	Spindle Gear (DLV7550)	TV00413	1

No.	Parts Name	Parts No.	Q'ty
28	Idle Gear (DLV7530)	TV00008	6
	Idle Gear (DLV7540)	TV00206	6
	Idle Gear (DLV7550)	TV00411	6
29	Gear Case (DLV7530)	TV00353	1
	Gear Case (DLV7540)	TV00403	1
	Gear Case (DLV7550)	TV00412	1
30	Screw (M2, 6-3mm)	TV04693	1
31	Pilot Rod (I)	TV00358	1
32	Motor Gear (DLV7530)	TV00389	1
	Motor Gear (DLV7540)	TV00405	1
	Motor Gear (DLV7550)	TV00414	1
33	Gear Cover	TV00390	1
34	Pilot Rod (G)	TV00082	1
35	Fan	TD00592	1
36	Pilot Rod (J)	TV00388	1
37	Motor Assembly	TD01831	1
38	End Cover (G)	TV00370	1
39	Assembly Spring	TV00371	2
40	Yoke Assembly	TD00577	1
41	Ball Bearing	TV00369	1
42	Rotor Assembly	TD01800	1
43	Ball Bearing	TV00069	1
44	End Cover (R)	TD01834	1
45	Brush Assembly	TD01802	2
46	Brush Cap	TV00395	1
47	Condenser	TV04694	2
48	Circuit Board Assembly for Change-Over Switch	TD01836	1
49	Change-Over Switch	TV00373	1
50	LED For Torque-Reach	TV00374	1
51	Change-Over Switch Rocker (DLV7530 : Orange)	TV00100	1
	Change-Over Switch Rocker (DLV7540 : White)	TV00099	1
	Change-Over Switch Rocker (DLV7550 : Blue)	TV00230	1
52	Circuit Board Assembly for Micro Switch	TD01911	1
53	Nut	TV00101	1
54	Pilot Rod (D)	TD00583	1
55	Adjusting Screw	TV00070	1
56	Spring for Pilot	TV00203	1
57	Circuit Board sub Assembly for Micro-Switch	TD02258	1
58	Screw (M2, 3-12mm)	TV00205	4
59	Micro-Switch (Start)	TV00484	1
60	Plate	TV00282	1
61	Micro-Switch (Brake)	TV00380	1
62	Screw (M2, 3-9mm)	TV00207	2
63	Lifting Hook Assembly	TD00585	1
64	Receptacle Assembly	TD01875	1
65	Rating Label		
66	Frame A (MKE Type)	TD01908	1
	Frame B (MKE Type)		
	Frame A (BKE Type) △		△
	Frame B (BKE Type) △		△
67	Vibration Proof Seal	TV00385	1
68	Spring for Trigger	TV00235	1
69	Trigger (MKE Type)	TV00285	1
	Trigger (BKE Type) △		△
70	Coupling	TV00336	1
71	WEE Label		
72	Warning Label		
73	Screw (M3X10)	TV00209	3
74	Power Cord Assembly (MKE Type)	TD01838	1
	Power Cord Assembly (BKE Type) △	TD02488	1
75	Spring Washer	TQ01400	1

DIMENSIONS OF APPEARANCES			TITLE PARTS LIST		DRAWING No. DZB0020-1	
mm			APPROVED	CHECKED	DRAWN	MODEL NAME DELVO
ISSUED (yyyy/mm/dd) 2005/9/26			MODEL No. DLV7530, 7540, 7550-MKE △DLV7530, 7540, 7550-BKE		NITTO KOHKI CO., LTD.	

管理 No. TV00399-1

Rev. 1 2010. 8. 20.