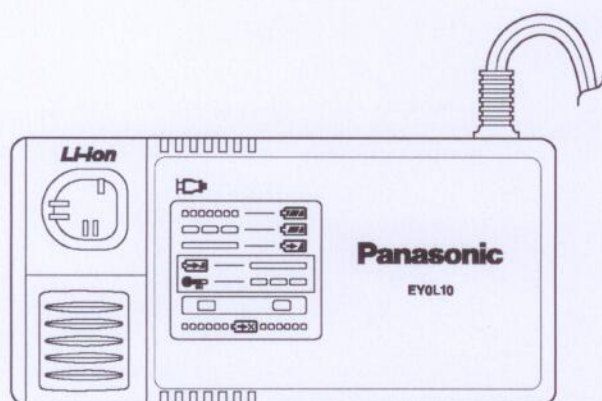


# Service Manual

Battery charger

EY0L10-X8



## SPECIFICATIONS

Input	220-240V AC, 50-60Hz
Output	2.8...6V, 4.8A
Power consumption	Max. 30W
Weight	0.6 kg (1.3lbs.)

### WARNING

This service information is designed for experienced repair technicians only and is not designed for use by the general public. It does not contain warnings or cautions to advise non-technical individuals of potential dangers in attempting to service a product. Products powered by electricity should be serviced or repaired only by experienced professional technicians. Any attempt to service or repair the product or products dealt with in this service information by anyone else could result in serious injury or death.

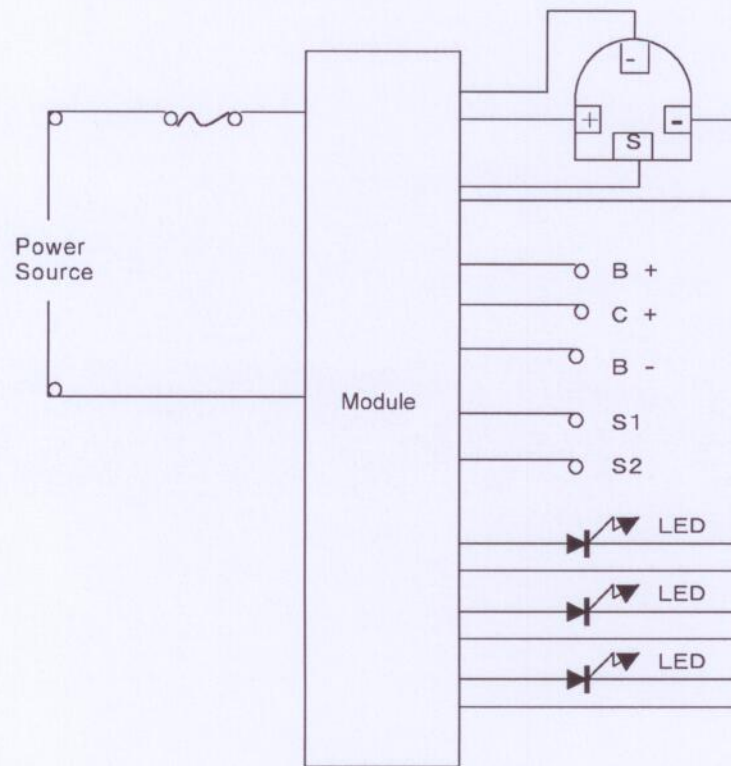
## CONTENTS

	Page		Page
1 SCHEMATIC DIAGRAM .....	2	4 EXPLODED VIEW .....	5
2 TROUBLESHOOTING GUIDE .....	3	5 REPLACEMENT PARTS LIST .....	5
3 CAUTION IN DISASSEMBLY/ASSEMBLY .....	4		

# Panasonic

© 2006 Matsushita Electric Works Ltd. All rights reserved. Unauthorized copying and distribution is a violation of law.

# 1 SCHEMATIC DIAGRAM

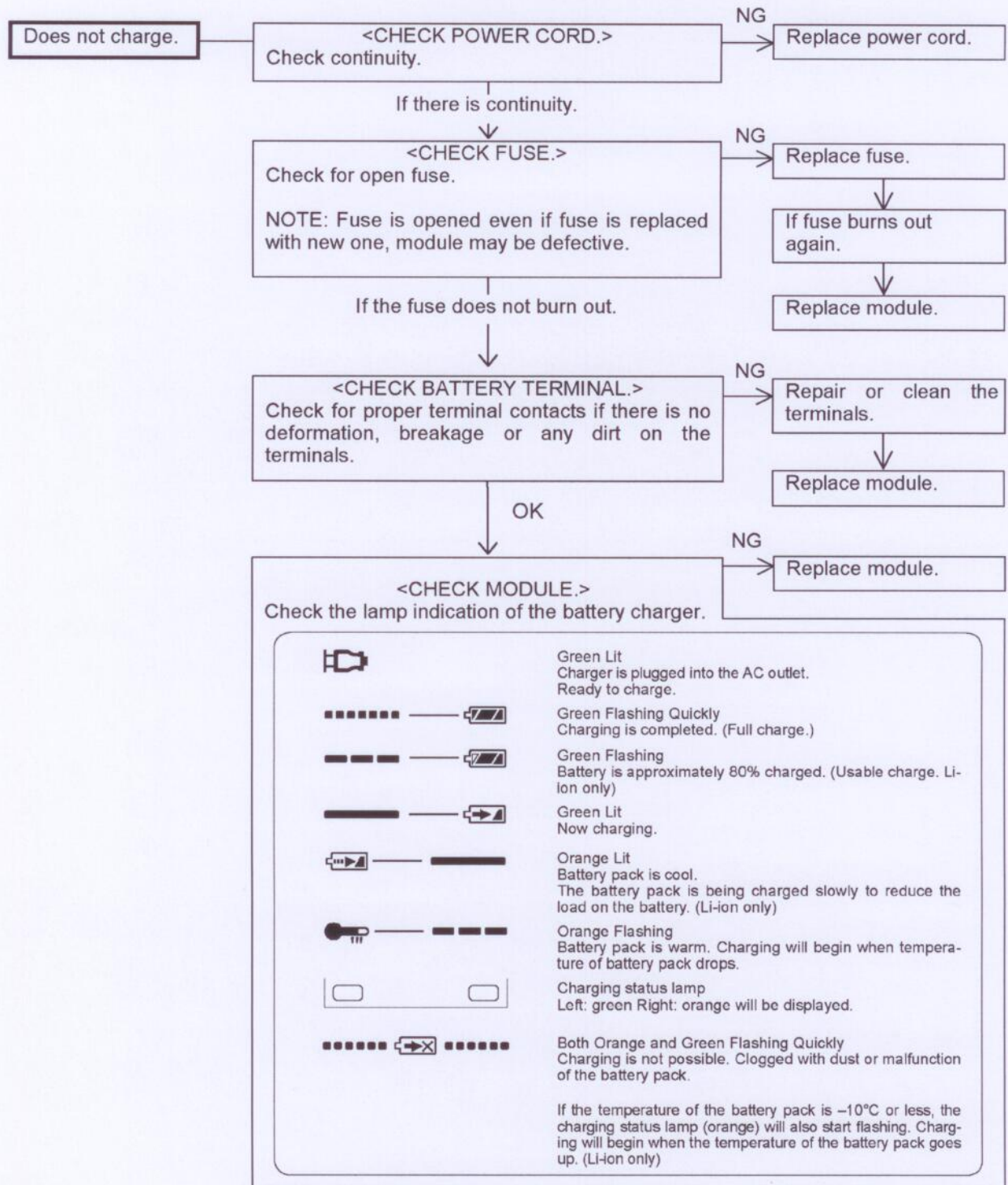


## 2 TROUBLESHOOTING GUIDE

&lt; TROUBLE &gt;

&lt; CHECK &gt;

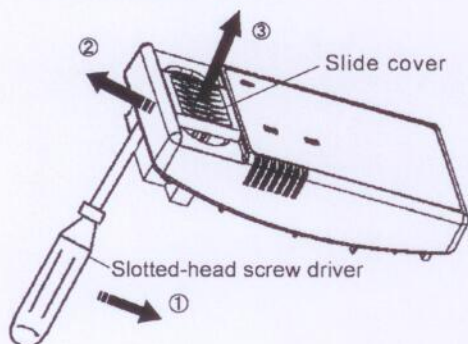
&lt; REMEDY &gt;





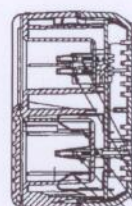
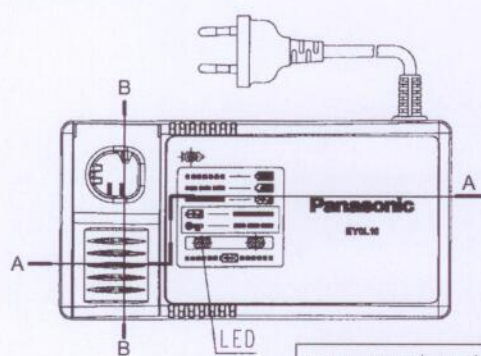
### 3 CAUTION IN DISASSEMBLY/ASSEMBLY

#### 3.1. Housing A



1. Insert the slotted-head screw driver into the slit between Housing A and Slide cover.
2. Slightly spread Housing outward and set Slide cover in the middle.
3. Take Slide cover out.

#### 3.2. Main Unit



SECT B-B

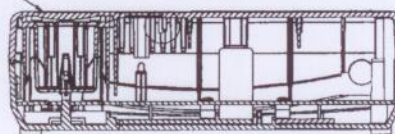
Pay attention not to deform contact terminal when fitting top case.

- Hook of LED lens (4 Places) must hang surely in rib of top case.
- There must not be dirt in the luminescence part when insert it.



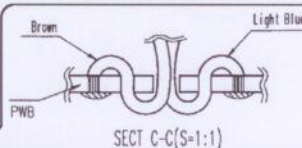
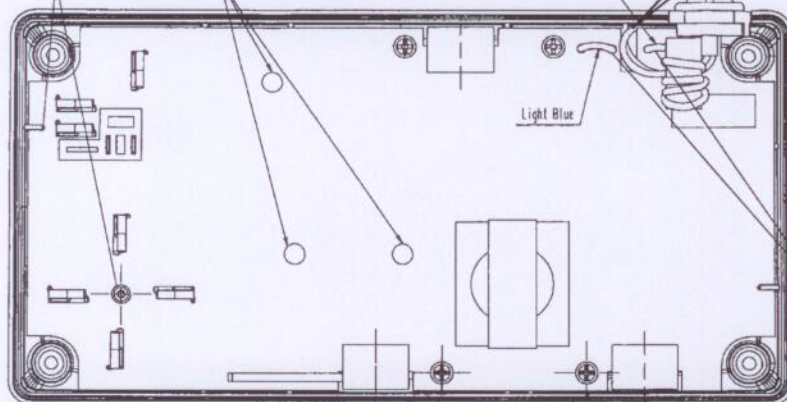
- The Hook of the slide cover must hang surely in Top case.
- The slide cover should smoothly do the slide.
- Retentivity of slide cover, More than 98N(10Kgf)

SECT A-A



Build in charge module according to this boss and the rib of bottom case.

Stand straight from LED.



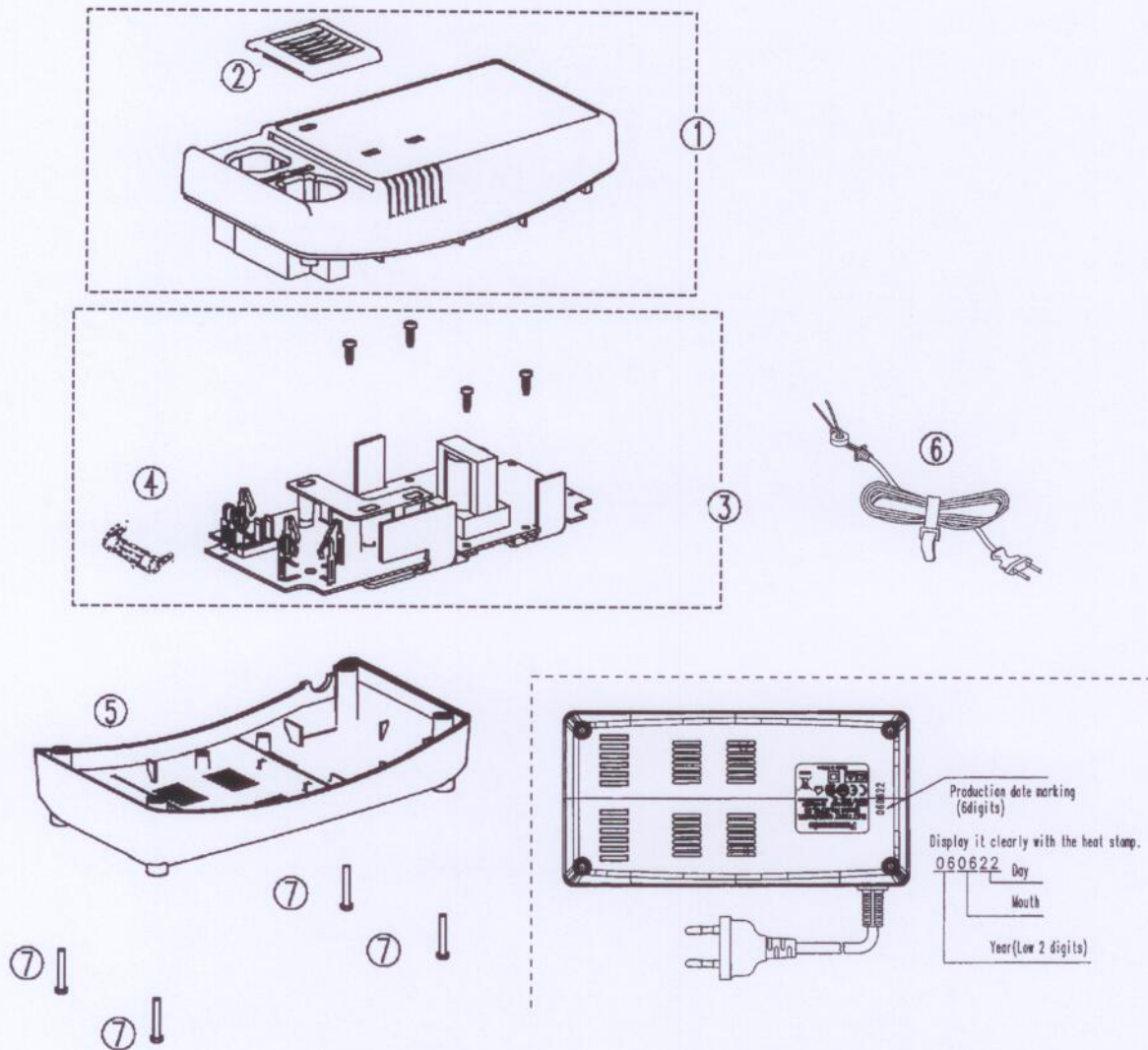
SECT C-C(S=1:1)

First of all, code is passed from the under through the hole of PWB, pass through the soldering hole afterwards, and solder.

There should be 3mm or more distance of the ring core and the fuse cap even if the power of 2-N is added to the ring core.

- Solder the point of the code after it bends it in the direction of figure.
- The point of the code must not overflow the pattern. (To secure the insulation distance.)

## 4 EXPLODED VIEW



## 5 REPLACEMENT PARTS LIST

### NOTE:

\*B=only available as set

\*C=available individually

Ref.No.	Part No.	Part Name & Description	Remarks	Per Unit
1	WEY0L10K3098	HOUSING A		1
2	WEY0L10K3107	SLIDE COVER		1
3	WEY0L10L2109	MODULE		1
4	WEY0L10L2618	FUSE	250V 3.15A	1
5	WEY0L10K3029	HOUSING B		1
5	WEY0L10K3020	HOUSING B	for U.K.	1
5	WEY0L10K3021	HOUSING B	for OCEANIA	1
6	WEY0L10K2059	POWER CORD	C-2 PLUG	1
6	WEY0L10K2050	POWER CORD	S-3 PLUG	1
6	WEY0L10K2051	POWER CORD	O PLUG	1
7	WEY0L10K6238	TORX TAPPING SCREW	*C K3-20	4
-	WEY0L10K8009	INDIVIDUAL BOX		1
-	WEY0L10K8109	OPERATING INSTRUCTIONS		1