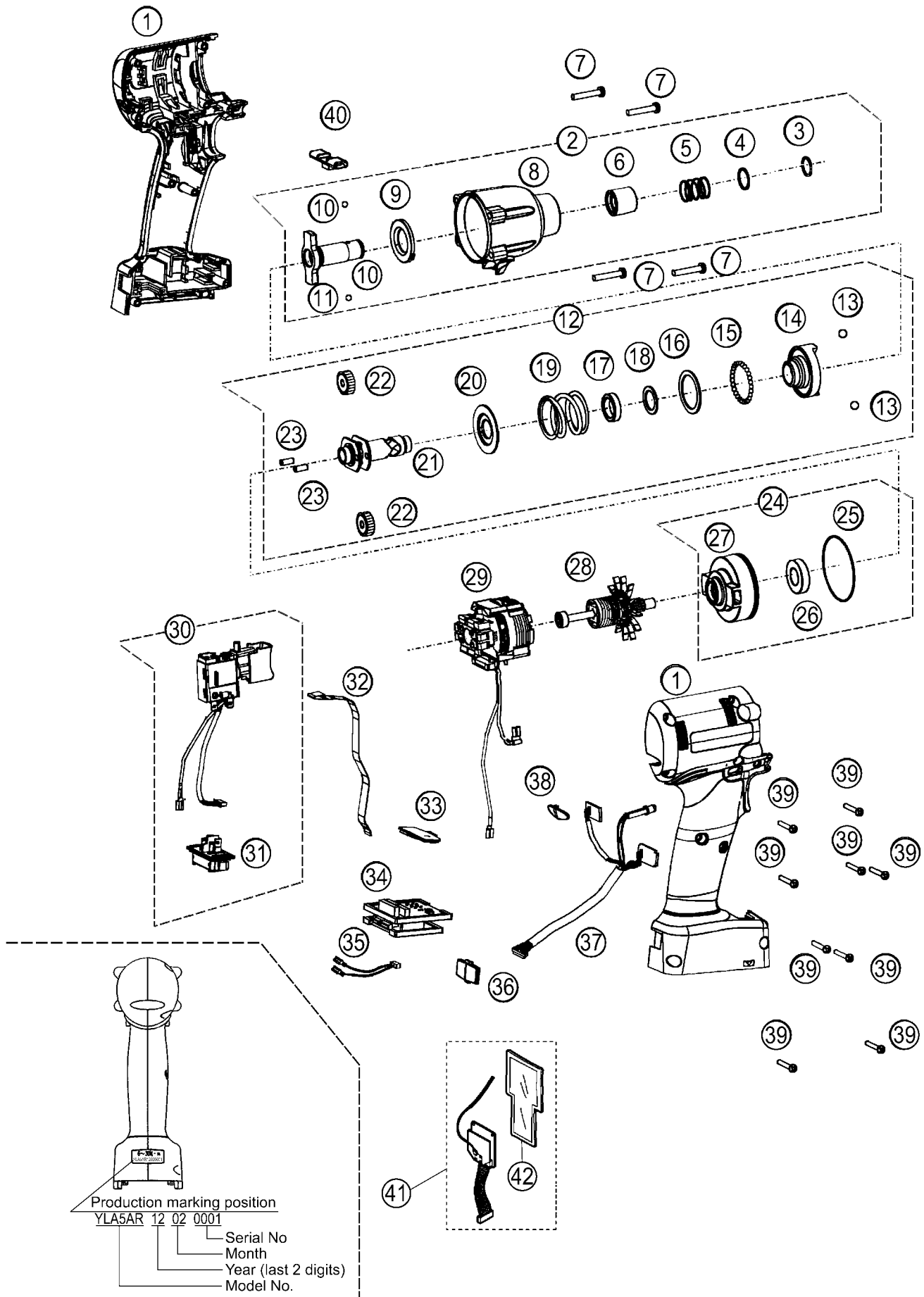


9.3. EXPLODED VIEW for EYFLA5AR



9.4. REPLACEMENT PARTS LIST for EYFLA5AR

Safety	Ref. No.	Part No.	Part Name & Description	Quantity	Remarks
	1	WEYFLA5AK329	HOUSING AB SET	1	
	2	WEYFLA1AK409	FIXATION COVER ASSEMBLY	1	
	3	WEY6507K1166	C-TYPE RING	1	
	4	WEY6507L0856	THRUST PLATE	1	
	5	WEY6507L0196	BIT HOLDER SPRING	1	
	6	WEYFLA1AK379	BIT HOLDER	1	
	7	WEYFMA1JL968	SEMS SCREW	4	(4*25) , (4PCS/PK)
	8	WEYFLA1AS318	FIXATION COVER	1	
	9	WEY6505L0866	SLIDER	1	
	10	WEY6507L6976	STEEL BALL	2	(ϕ 5/32) , (2PCS/PK)
	11	WEYFLA1AL128	ANVIL	1	
	12	WEYFLA2NL107	DRIVING SHAFT ASSEMBLY	1	
	13	WEY7201L6966	STEEL BALL	2	(7/32) , (2PCS/PK)
	14	WEYFLA2AL157	HAMMER	1	
	15	WEY7205L6957	STEEL BALL	29	(29PCS/PK)
	16	WEYFLA1AL087	THRUST PLATE	1	
	17	WEYFLA1AL037	CUSHION RUBBER	1	
	18	WEYFLA1AL097	THRUST PLATE	1	
	19	WEYFLA2AL017	HAMMER SPRING	1	
	20	WEYFLA1AL137	SPRING FIXING PLATE	1	
	21	WEY7540L1137	DRIVING SHAFT	1	
	22	WEY2602B1357	PLANET GEAR	2	(2PCS/PK)
	23	WEY6506L1346	PIN	2	(2PCS/PK)
	24	WEYFLA1AL007	MOTOR MOUNTING PLATE ASSEMBLY	1	
	25	WEYT611L0967	O-RING	1	(43.6*1.3)
	26	WEYFLA1AL497	BEARING	1	
	27	WEY7205L0037	MOTOR MOUNTING PLATE	1	
	28	WEYFLA1AL147	MOTOR ROTOR ASSEMBLY	1	
	29	WEYFLA1AL118	STATOR	1	
	30	WEYFLA1AK207	SWITCH ASSEMBLY	1	
	31	WEY7540L2157	BATTERY TERMINAL BLOCK	1	
	32	WEYFLA1AL207	RIBBON CABLE	1	
	33	WEYFLA1AK337	OPERATION PANEL	1	
	34	WEYFLA4AL218	MODULE ASSEMBLY	1	
	35	WEYFLA1AL297	HARNESS	1	
	36	WEYFLA2AL337	DISCERNMENT PLATE	1	
	37	WEYFLA1AL227	LED ASSEMBLY	1	
	38	WEYFLA1AL377	TIGHTENING CONFIRMATION LAMP COVER	1	
	39	WEY6930K9037	TIGHT SCREW	9	(K3*20)
	40	WEYFLA1AK327	F/R SELECTOR HANDLE	1	
	41	WEYFLA4AR277	TRANSMITTER	1	
	42	WEYFLA4AR028	CUSHION	1	
	-	WEYFLA4AR819	OPERATING INSTRUCTIONS	1	
	-	WEYFLA1AK838	HEAT-RESISTANCE TAPE	1	(30M)
	-	WEWGW2	FLOIL GREASE	1	
	-	WEY002X8977	GREASE (DOUBREX)	1	