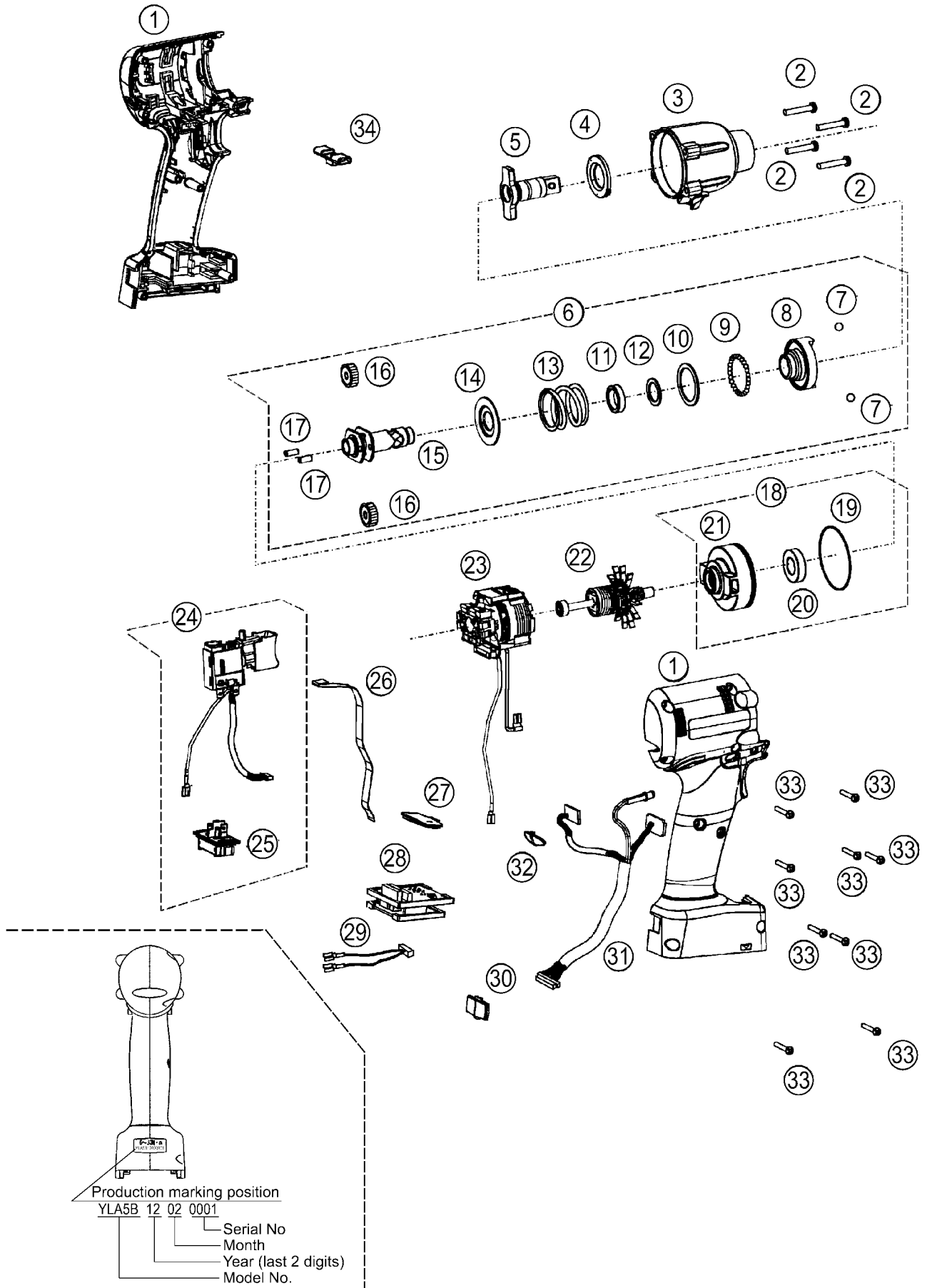


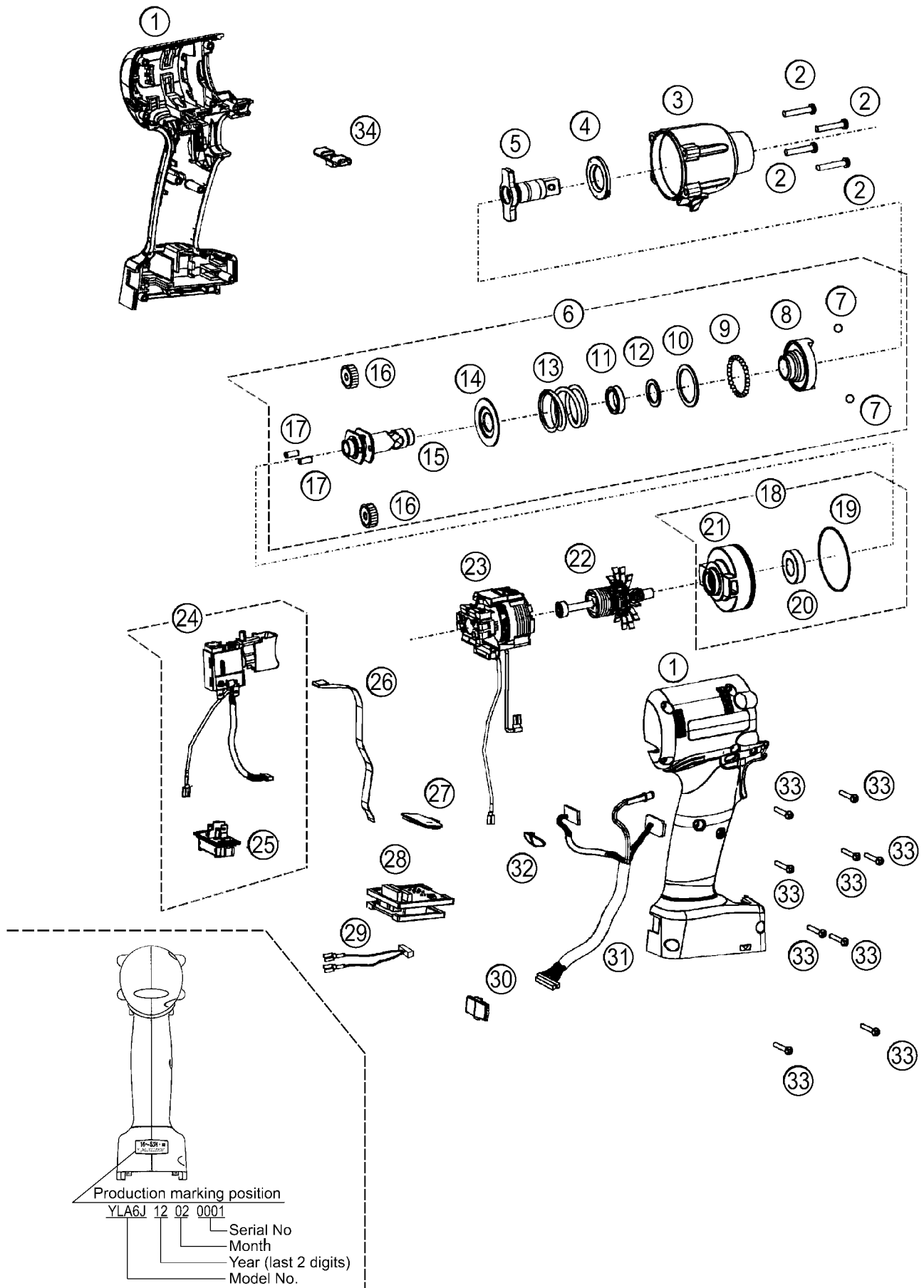
9.7. EXPLODED VIEW for EYFLA5B



9.8. REPLACEMENT PARTS LIST for EYFLA5B

Safety	Ref. No.	Part No.	Part Name & Description	Quantity	Remarks
	1	WEYFLA5BK308	HOUSING AB SET	1	
	2	WEYFMA1JL968	SEMS SCREW	4	(4*25) , (4PCS/PK)
	3	WEYFLA1AS318	FIXATION COVER	1	
	4	WEY6505L0866	SLIDER	1	
	5	WEYFLA5BL128	ANVIL	1	(BALL DETENT TYPE)
	6	WEYFLA2NL107	DRIVING SHAFT ASSEMBLY	1	
	7	WEY7201L6966	STEEL BALL	2	(2PCS/PK)
	8	WEYFLA2AL157	HAMMER	1	
	9	WEY7205L6957	STEEL BALL	29	(29PCS/PK)
	10	WEYFLA1AL087	THRUST PLATE	1	
	11	WEYFLA1AL037	CUSHION RUBBER	1	
	12	WEYFLA1AL097	THRUST PLATE	1	
	13	WEYFLA2AL017	HAMMER SPRING	1	
	14	WEYFLA1AL137	SPRING FIXING PLATE	1	
	15	WEY7540L1137	DRIVING SHAFT	1	
	16	WEY2602B1357	PLANET GEAR	2	(2PCS/PK)
	17	WEY6506L1346	PIN	2	(2PCS/PK)
	18	WEYFLA1AL007	MOTOR MOUNTING PLATE ASSEMBLY	1	
	19	WEYT611L0967	O-RING	1	
	20	WEYFLA1AL497	BEARING	1	
	21	WEY7205L0037	MOTOR MOUNTING PLATE	1	
	22	WEYFLA1AL147	MOTOR ROTOR ASSEMBLY	1	
	23	WEYFLA5BL118	STATOR	1	
	24	WEYFLA1AK207	SWITCH ASSEMBLY	1	
	25	WEY7540L2157	BATTERY TERMINAL BLOCK	1	
	26	WEYFLA1AL207	RIBBON CABLE	1	
	27	WEYFLA1AK337	OPERATION PANEL	1	
	28	WEYFLA6PL219	MODULE ASSEMBLY	1	
	29	WEYFLA1AL297	HARNESS	1	
	30	WEYFLA2AL337	DISCERNMENT PLATE	1	
	31	WEYFLA1AL227	LED ASSEMBLY	1	
	32	WEYFLA1AL377	TIGHTENING CONFIRMATION LAMP COVER	1	
	33	WEY6930K9037	TIGHT SCREW	9	(K3*20)
	34	WEYFLA1AK327	F/R SELECTOR HANDLE	1	
	-	WEYFLA4AR819	OPERATING INSTRUCTIONS	1	
	-	WEYFLA1AK838	HEAT-RESISTANCE TAPE	1	(30M)
	-	WEWGW2	FLOIL GREASE	1	(AH-137N-2)
		WEY002X8977	GREASE (DOUBREX)	1	

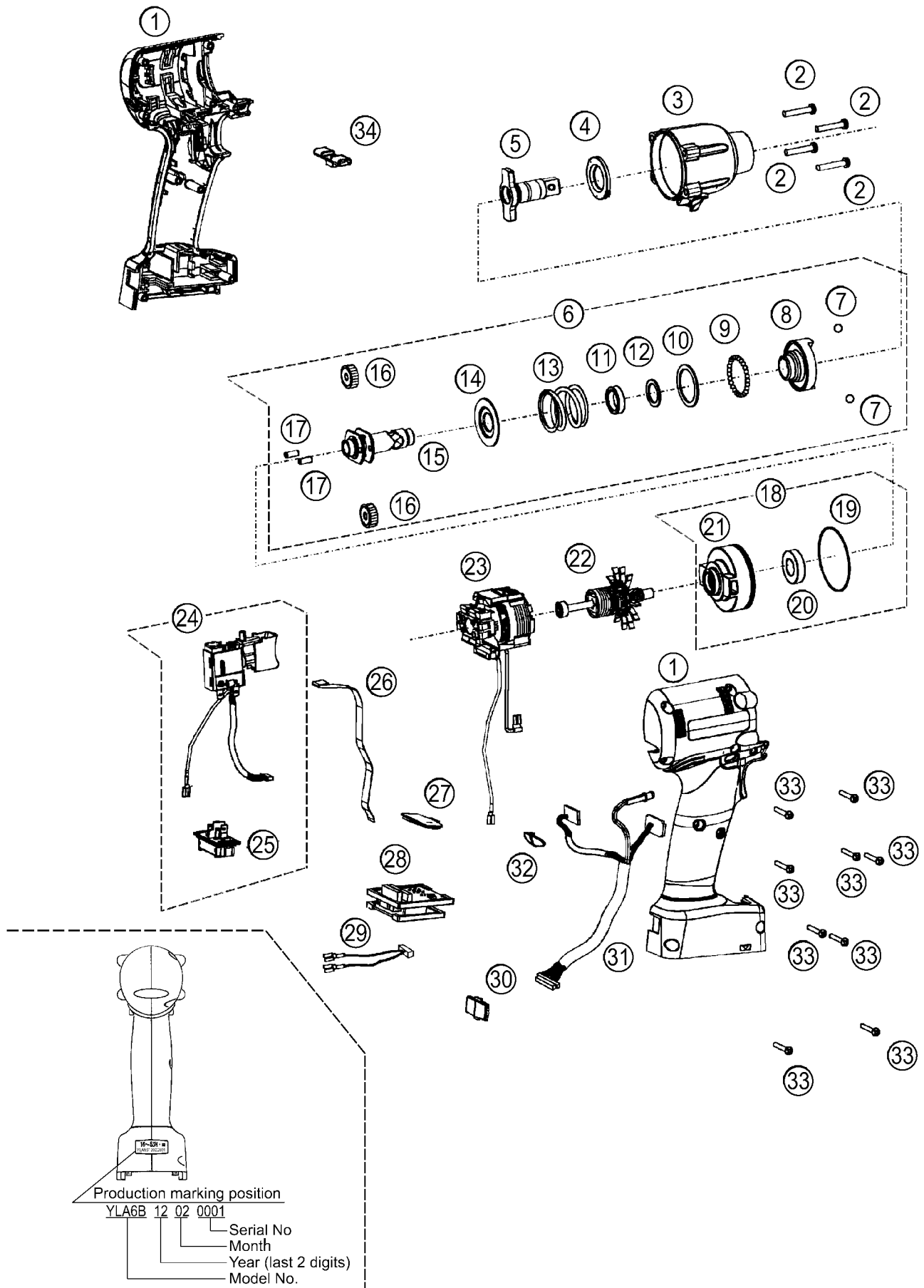
9.9. EXPLODED VIEW for EYFLA6J



9.10. REPLACEMENT PARTS LIST for EYFLA6J

Safety	Ref. No.	Part No.	Part Name & Description	Quantity	Remarks
	1	WEYFLA6JK3P9	HOUSING AB SET	1	
	2	WEYFMA1JL968	SEMS SCREW	4	(4*25) , (4PCS/PK)
	3	WEYFLA3JS317	FIXATION COVER	1	
	4	WEY6631K0867	SLIDER	1	
	5	WEYFLA6JL127	ANVIL	1	
	6	WEYFLA3JL107	DRIVING SHAFT ASSEMBLY	1	
	7	WEY7201L6966	STEEL BALL	2	(7/32) , (2PCS/PK)
	8	WEYFLA3JL157	HAMMER	1	
	9	WEY7205L6957	STEEL BALL	29	(29PCS/PK)
	10	WEYFLA1AL087	THRUST PLATE	1	
	11	WEYFLA3JL037	CUSHION RUBBER	1	
	12	WEYFLA3JL087	THRUST PLATE	1	
	13	WEY7541L0217	HAMMER SPRING	1	
	14	WEY6508L1146	SPRING FIXING PLATE	1	
	15	WEYFLA3JL137	DRIVING SHAFT	1	
	16	WEY6504L1357	PLANET GEAR	2	(2PCS/PK)
	17	WEY6506L1346	PIN	2	(2PCS/PK)
	18	WEYFLA1AL007	MOTOR MOUNTING PLATE ASSEMBLY	1	
	19	WEYT611L0967	O-RING	1	(43.6*1.3)
	20	WEYFLA1AL497	BEARING	1	
	21	WEY7205L0037	MOTOR MOUNTING PLATE	1	
	22	WEYFLA1AL147	MOTOR ROTOR ASSEMBLY	1	
	23	WEYFLA1AL118	STATOR	1	
	24	WEYFLA1AK207	SWITCH ASSEMBLY	1	
	25	WEY7540L2157	BATTERY TERMINAL BLOCK	1	
	26	WEYFLA1AL207	RIBBON CABLE	1	
	27	WEYFLA1AK337	OPERATION PANEL	1	
	28	WEYFLA4AL219	MODULE ASSEMBLY	1	
	29	WEYFLA1AL297	HARNESS	1	
	30	WEYFLA3JL337	DISCERNMENT PLATE	1	
	31	WEYFLA3JL227	LED ASSEMBLY	1	
	32	WEYFLA1AL377	TIGHTENING CONFIRMATION LAMP COVER	1	
	33	WEY6930K9037	TIGHT SCREW	9	(K3*20)
	34	WEYFLA1AK327	F/R SELECTOR HANDLE	1	
	-	WEYFLA4AR819	OPERATING INSTRUCTIONS	1	
	-	WEYFLA1AK838	HEAT-RESISTANCE TAPE	1	(30M)
	-	WEWGW2	FLOIL GREASE	1	(AH-137N-2)
	-	WEY002X8977	GREASE (DOUBREX)	1	

9.11. EXPLODED VIEW for EYFLA6B



9.12. REPLACEMENT PARTS LIST for EYFLA6B

Safety	Ref. No.	Part No.	Part Name & Description	Quantity	Remarks
	1	WEYFLA6BK308	HOUSING AB SET	1	
	2	WEYFMA1JL968	SEMS SCREW	4	(4*25) , (4PCS/PK)
	3	WEYFLA6PS318	FIXATION COVER	1	
	4	WEY6631K0867	SLIDER	1	
	5	WEYFMA1BL119	ANVIL	1	(BALL DETENT TYPE)
	6	WEYFLA6PL108	DRIVING SHAFT ASSEMBLY	1	
	7	WEY7201L6966	STEEL BALL	2	(7/32) , (2PCS/PK)
	8	WEYFLA3JL157	HAMMER	1	
	9	WEY7205L6957	STEEL BALL	29	(29PCS/PK)
	10	WEYFLA1AL087	THRUST PLATE	1	
	11	WEYFLA3JL037	CUSHION RUBBER	1	
	12	WEYFLA3JL087	THRUST PLATE	1	
	13	WEY7541L0217	HAMMER SPRING	1	
	14	WEY6508L1146	SPRING FIXING PLATE	1	
	15	WEYFLA3JL137	DRIVING SHAFT	1	
	16	WEY6504L1357	PLANET GEAR	2	(2PCS/PK)
	17	WEY6506L1346	PIN	2	(2PCS/PK)
	18	WEYFLA1AL007	MOTOR MOUNTING PLATE ASSEMBLY	1	
	19	WEYT611L0967	O-RING	1	(43.6*1.3)
	20	WEYFLA1AL497	BEARING	1	
	21	WEY7205L0037	MOTOR MOUNTING PLATE	1	
	22	WEYFLA1AL147	MOTOR ROTOR ASSEMBLY	1	
	23	WEYFLA5BL118	STATOR	1	
	24	WEYFLA1AK207	SWITCH ASSEMBLY	1	
	25	WEY7540L2157	BATTERY TERMINAL BLOCK	1	
	26	WEYFLA1AL207	RIBBON CABLE	1	
	27	WEYFLA1AK337	OPERATION PANEL	1	
	28	WEYFLA6PL219	MODULE ASSEMBLY	1	
	29	WEYFLA1AL297	HARNESS	1	
	30	WEYFLA3JL337	DISCERNMENT PLATE	1	
	31	WEYFLA3JL227	LED ASSEMBLY	1	
	32	WEYFLA1AL377	TIGHTENING CONFIRMATION LAMP COVER	1	
	33	WEY6930K9037	TIGHT SCREW	9	(K3*20)
	34	WEYFLA1AK327	F/R SELECTOR HANDLE	1	
	-	WEYFLA4AR819	OPERATING INSTRUCTIONS	1	
	-	WEYFLA1AK838	HEAT-RESISTANCE TAPE	1	(30M)
	-	WEWGW2	FLOIL GREASE	1	(AH-137N-2)
	-	WEY002X8977	GREASE (DOUBREX)	1	