

# Service Manual

Cordless Impact Driver / Cordless Impact Wrench



Model No. **EYFLA7A**

Model No. **EYFLA8A**

Model No. **EYFLA8P**

Europe



Cordless Impact Driver




Cordless Impact Wrench

Please file and use this manual together with the service manual for Model No. EYFLA9C, EYFMA2C, EYFLA9P, EYFMA2P, order No PTD1902E58CE.

## WARNING

This service information is designed for experienced repair technicians only and is not designed for use by the general public. It does not contain warnings or cautions to advise non-technical individuals of potential dangers in attempting to service a product. Products powered by electricity should be serviced or repaired only by experienced professional technicians. Any attempt to service or repair the product or products dealt with in this service information by anyone else could result in serious injury or death.

## IMPORTANT SAFETY NOTICE

There are special components used in this equipment which are important for safety. These parts are marked by  in the Schematic Diagrams, Circuit Board Diagrams, Exploded Views and Replacement Parts List. It is essential that these critical parts should be replaced with manufacturer's specified parts to prevent shock, fire or other hazards. Do not modify the original design without permission of manufacturer.

## TABLE OF CONTENTS

	PAGE
1 Warning-----	2
2 Specifications -----	2
3 Trial Operation (after checking Troubleshooting Guide) -----	3
4 Disassembly and Assembly Instructions -----	3
5 Exploded View and Replacement Parts List -----	5

PAGE

# Panasonic

© Panasonic Corporation 2019. All rights reserved.  
Unauthorized copying and distribution is a violation of law.

# 1 Warning

## Caution:

- Pb free solder has a higher melting point than standard solder; Typically the melting point is 50 - 70°F (30 - 40°C) higher. Please use a soldering iron with temperature control and adjust it to 750 ± 20°F (400 ± 10°C). In case of using high temperature soldering iron, please be careful not to heat too long.
- Pb free solder will tend to splash when heated too high (about 1100°F / 600°C).

# 2 Specifications

## MAIN UNIT

Model		EYFLA7		EYFLA8	
		A		A	P
Motor		10.8 V DC			
Chuck size	Single-ended	9 – 9.5 mm (23/64" – 3/8")		□9.5 mm (3/8")	
	Double-ended	12 mm (15/32")			
No load speed	Stage	1	0 – 950	1	0 – 1300
		2	0 – 1250	2	0 – 1450
		3	0 – 1450	3	0 – 1550
		4 – 8	0 – 1550	4 – 40·F	0 – 2300
		9 – 40·F	0 – 2300		
Impact per minute	Stage	1	0 – 1800	1	0 – 2400
		2	0 – 2250	2	0 – 2500
		3	0 – 2500	3	0 – 2800
		4 – 8	0 – 2950	4 – 40·F	0 – 3300
		9 – 40·F	0 – 3600		
Maximum torque		35 N·m (360 kgf·cm, 310 in·lbs)		80 N·m (820 kgf·cm, 709 in·lbs)	
Torque control function operating range		Approx. 3 – 22 N·m (31 – 224 kgf·cm, 27 – 195 in·lbs)		Approx. 6 – 30 N·m (61 – 306 kgf·cm, 53 – 266 in·lbs)	
Overall length		153 mm (6-1/32")		162 mm (6-3/8")	
Weight (with battery pack: EYFB30)		1.3 kg (2.9 lbs)		1.35 kg (3.0 lbs)	
Weight (with battery pack: EYFB32)		1.15 kg (2.5 lbs)		1.15 kg (2.5 lbs)	

### 3 Trial Operation (after checking Troubleshooting Guide)

- Check whether the ID setting has been properly configured after repair and reassembly.

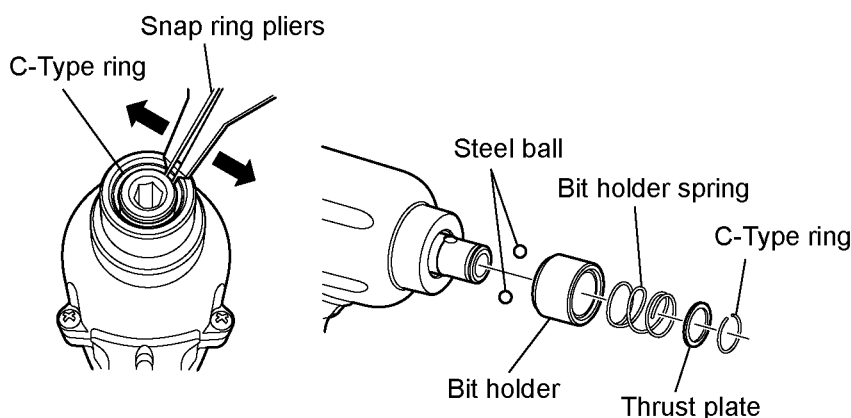
#### 【 Method of confirmation 】

1. Press D button on the remote control
2. Confirm the operation panel display

Display	Tool circuit
H7	EYFLA7
H8	EYFLA8

## 4 Disassembly and Assembly Instructions

### 4.1. How to remove the C-Type ring (only for EYFLA7A / EYFLA8A).

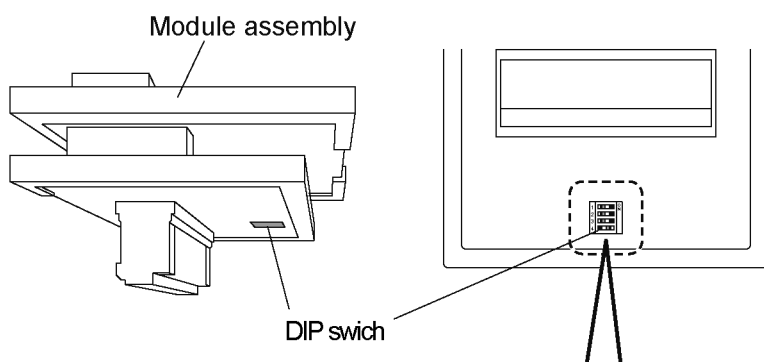


1. Insert the closed jaws of a pair of snap ring pliers into the notch in the C type ring. Open the jaws and lift up on the spring to remove it.
2. Once you have removed bit C spring, remove the thrust plate, bit holder spring, bit holder and steel balls.

#### \*Tips on assembling

- When inserting the steel ball, apply grease to temporarily hold it place.
- Removing snap ring becomes easier if you use snap ring plier with tips grinded to flat.

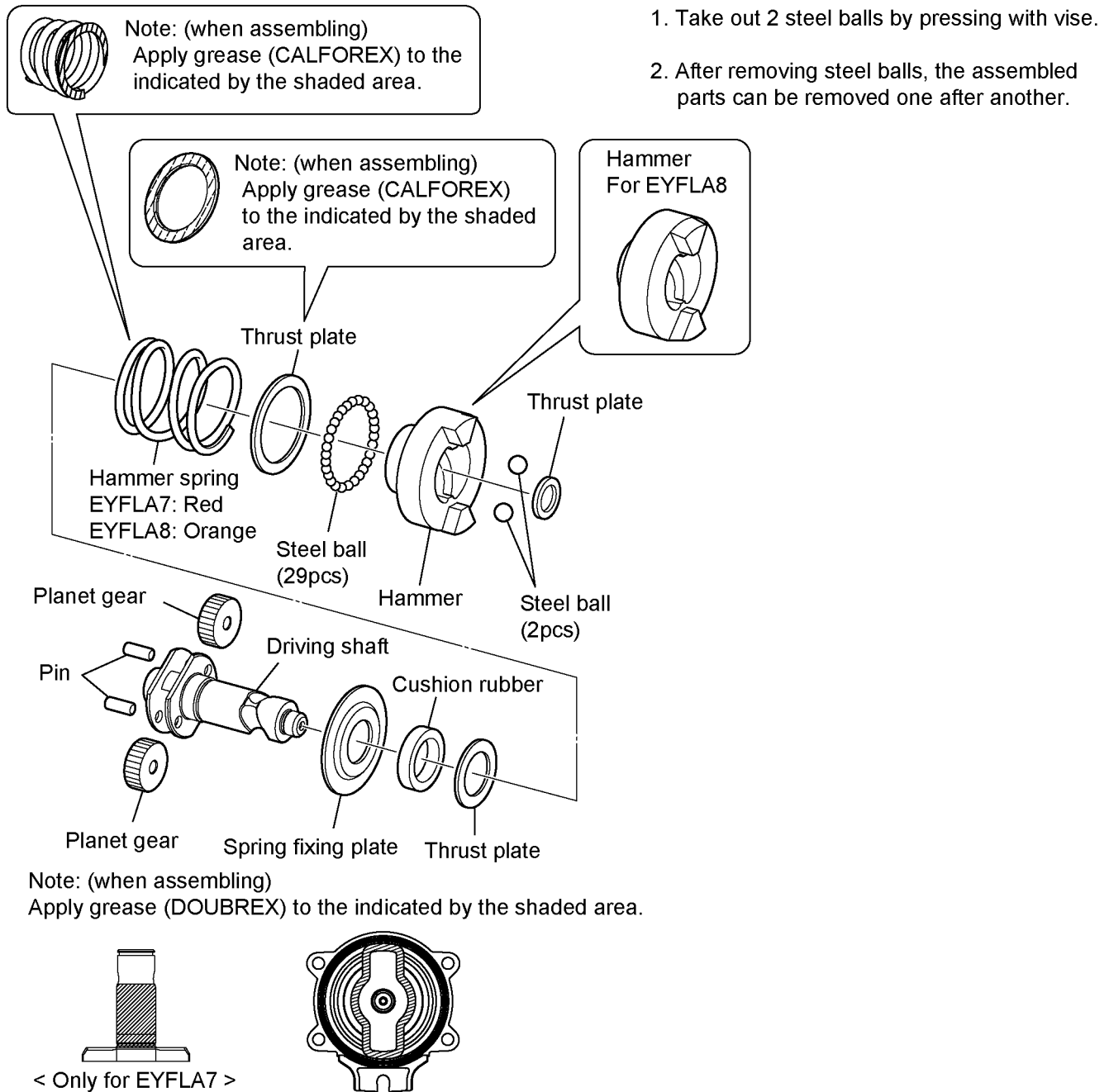
### 4.2. Checking and setting the Module assembly's DIP switches.



Check the settings of the DIP switches on the bottom of the module assembly's control switch.

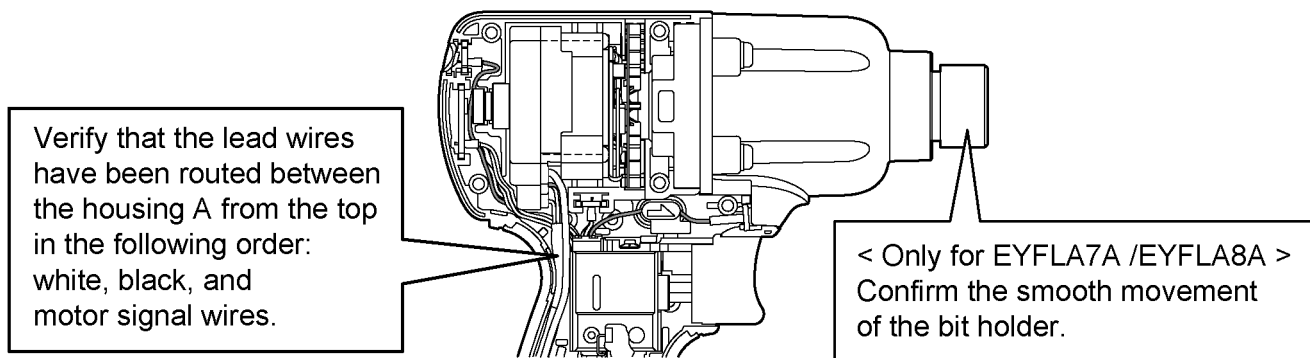
Model. EYFLA7				Model. EYFLA8			
<Condition>				<Condition>			
1	<input checked="" type="checkbox"/>	<input type="checkbox"/>	ON	1	<input type="checkbox"/>	<input checked="" type="checkbox"/>	OFF
2	<input type="checkbox"/>	<input checked="" type="checkbox"/>	OFF	2	<input checked="" type="checkbox"/>	<input type="checkbox"/>	ON
3	<input type="checkbox"/>	<input type="checkbox"/>	OFF	3	<input type="checkbox"/>	<input checked="" type="checkbox"/>	OFF
4	<input type="checkbox"/>	<input type="checkbox"/>	OFF	4	<input type="checkbox"/>	<input type="checkbox"/>	OFF

### 4.3. How to remove the Driving shaft assembly.



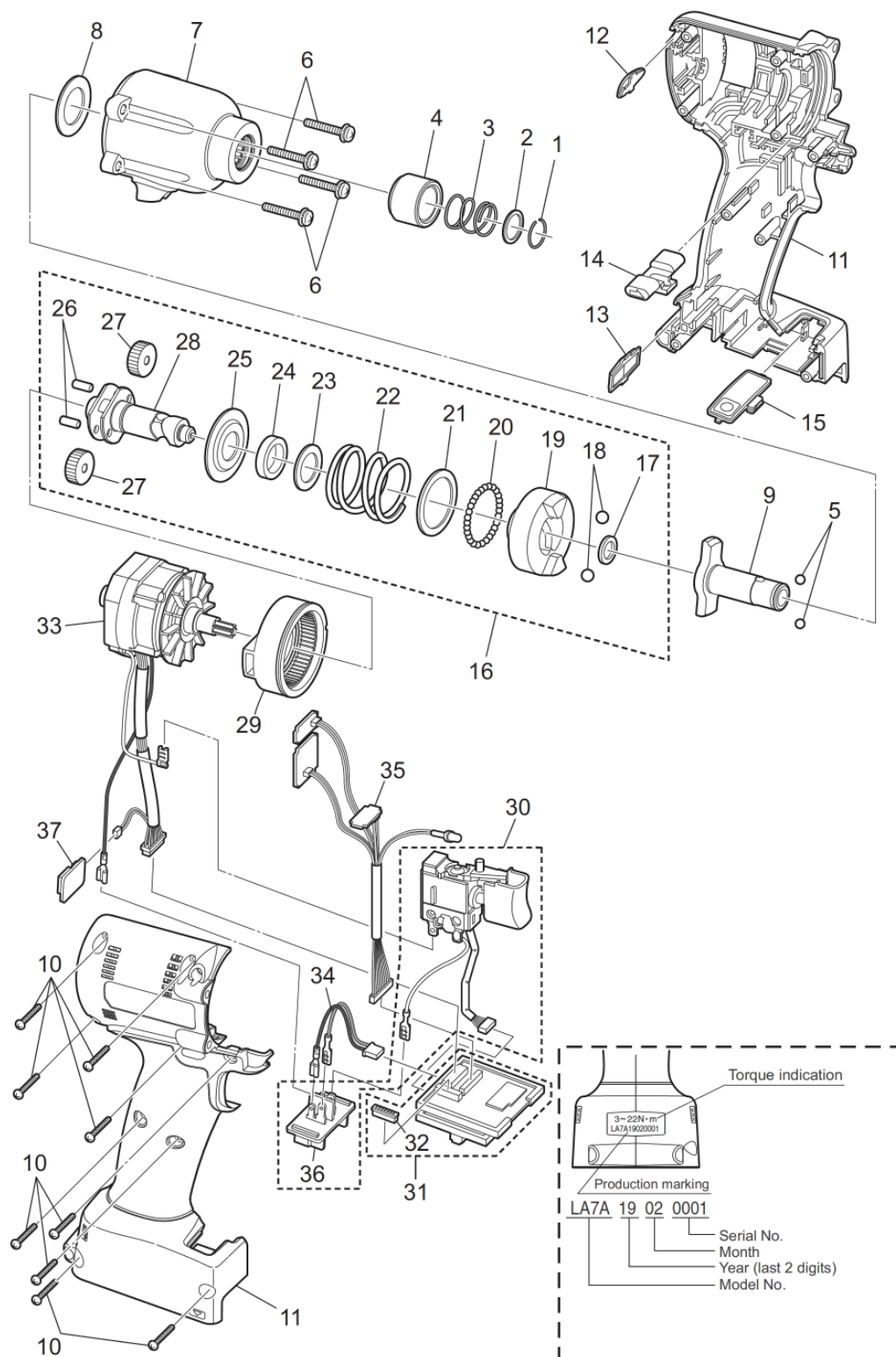
1. Take out 2 steel balls by pressing with vise.
2. After removing steel balls, the assembled parts can be removed one after another.

### 4.4. Wiring and Assembly Points.



# 5 Exploded View and Replacement Parts List

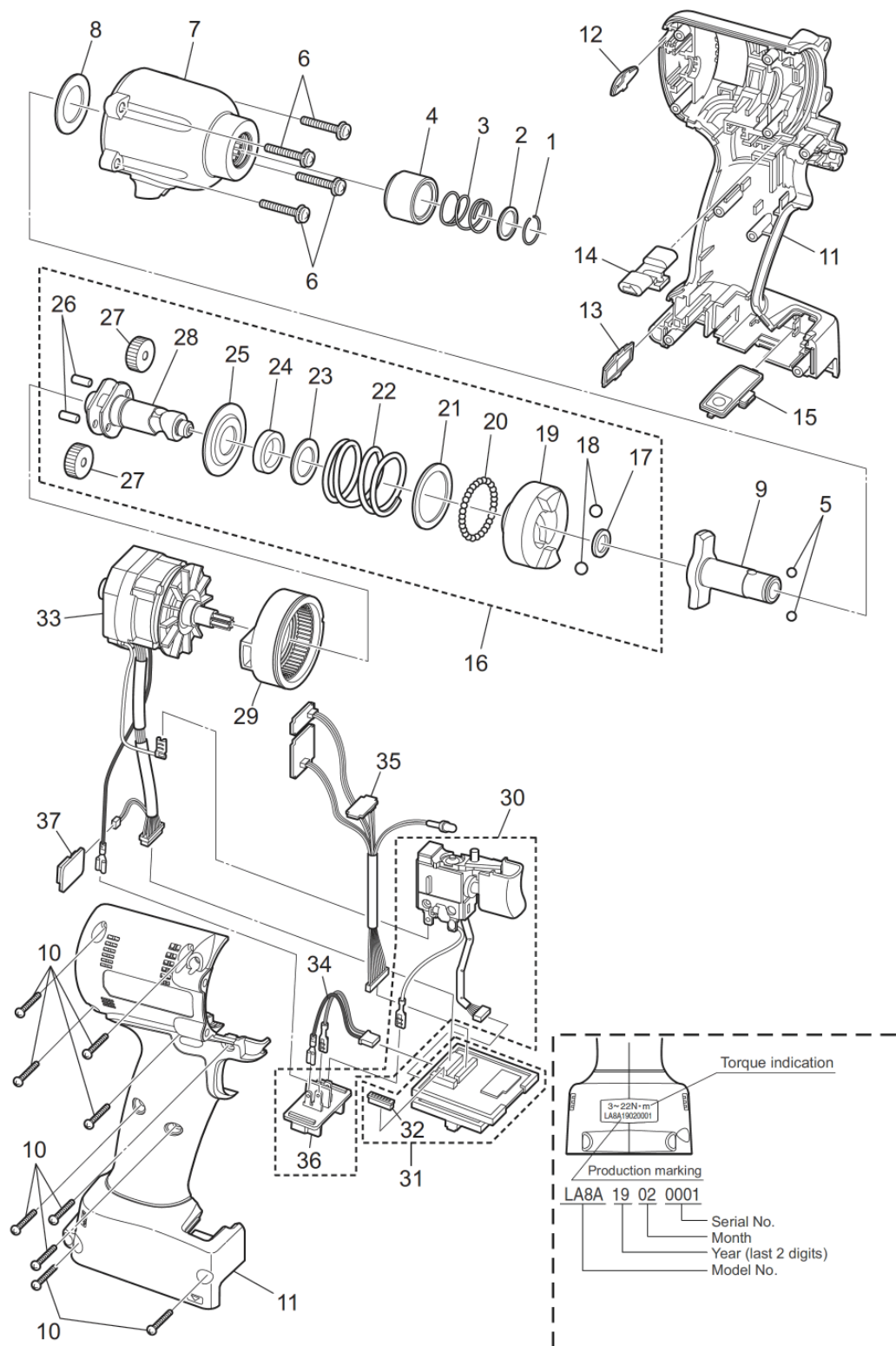
Model No. : EYFLA7A Exploded View



## Model No. : EYFLA7A    Parts List

Change	Safety	Ref. No.	Part No.	Part Name & Description	Q'ty	Remarks
EYFLA7A						
		1	WEY6507K1166	C-TYPE RING	1	
		2	WEY6507L0856	THRUST PLATE	1	
		3	WEY6507L0196	BIT HOLDER SPRING	1	
		4	WEYFLA1AK379	BIT HOLDER	1	
		5	WEY6507L6976	STEEL BALL	2	(2PCS/PK)
		6	WEYFMA2CK607	DPT SEMS TAPPING SCREW	4	(5PCS/PK)
		7	WEYFLA7AS457	SHAFT COVER ASSEMBLY	1	
		8	WEYFLA7AS047	THRUST PLATE	1	
		9	WEYFLA7AS127	ANVIL	1	
		10	WEYFME1CK967	TAPPING SCREW	9	(5PCS/PK)
		11	WEYFLA7AK371	HOUSING AB SET	1	
		12	WEYFPA1JL377	TIGHTENING CONFIRMATION LAMP COVER	1	
		13	WEYFLA1AL337	DISCERNMENT PLATE	1	
		14	WEYFLA1AK327	F/R SELECTOR HANDLE	1	
		15	WEYFGA1NK337	OPERATION PLATE ASSEMBLY	1	
		16	WEYFLA7AS157	DRIVING SHAFT ASSMBLY	1	
		17	WEYFMA1JL087	THRUST PLATE	1	
		18	WEY7201L6966	STEEL BALL	2	(2PCS/PK)
		19	WEYFLA7AS177	HAMMER	1	
		20	WEY7205L6957	STEEL BALL	29	(29PCS/PK)
		21	WEYFLA1AL087	THRUST PLATE	1	
		22	WEYFLA1AL017	HAMMER SPRING	1	
		23	WEYFLA1AL097	THRUST PLATE	1	
		24	WEYFLA1AL037	CUSHION RUBBER	1	
		25	WEYFLA1AL137	SPRING FIXING PLATE	1	
		26	WEY6506L1346	PIN	2	(2PCS/PK)
		27	WEY2602B1357	PLANET GEAR	2	(2PCS/PK)
		28	WEYFLA3JL137	DRIVING SHAFT	1	
		29	WEYFLA1AL007	MOTOR MOUNTING PLATE ASSEMBLY	1	
		30	WEYFLA1AK207	SWITCH ASSEMBLY	1	
		31	WEYFMA2CL207	MODULE ASSEMBLY	1	
		32	WEYFGA1NW287	CONNECTOR	1	
		33	WEYFLA7AL107	MOTOR ASSEMBLY	1	
		34	WEYFLA1AL297	HARNESS	1	
		35	WEYFMA2CL287	SENSOR LED CIRCUIT ASSEMBLY	1	
		36	WEY7540L2157	BATTERY TERMINAL BLOCK	1	
		37	WEYFME1CL267	BUZZER BOARD	1	
		-	WEY001T8957	FLOIL GREASE	1	
		-	WEY002X8977	GREASE (DOUBREX)	1	

Model No. : EYFLA8A    Exploded View

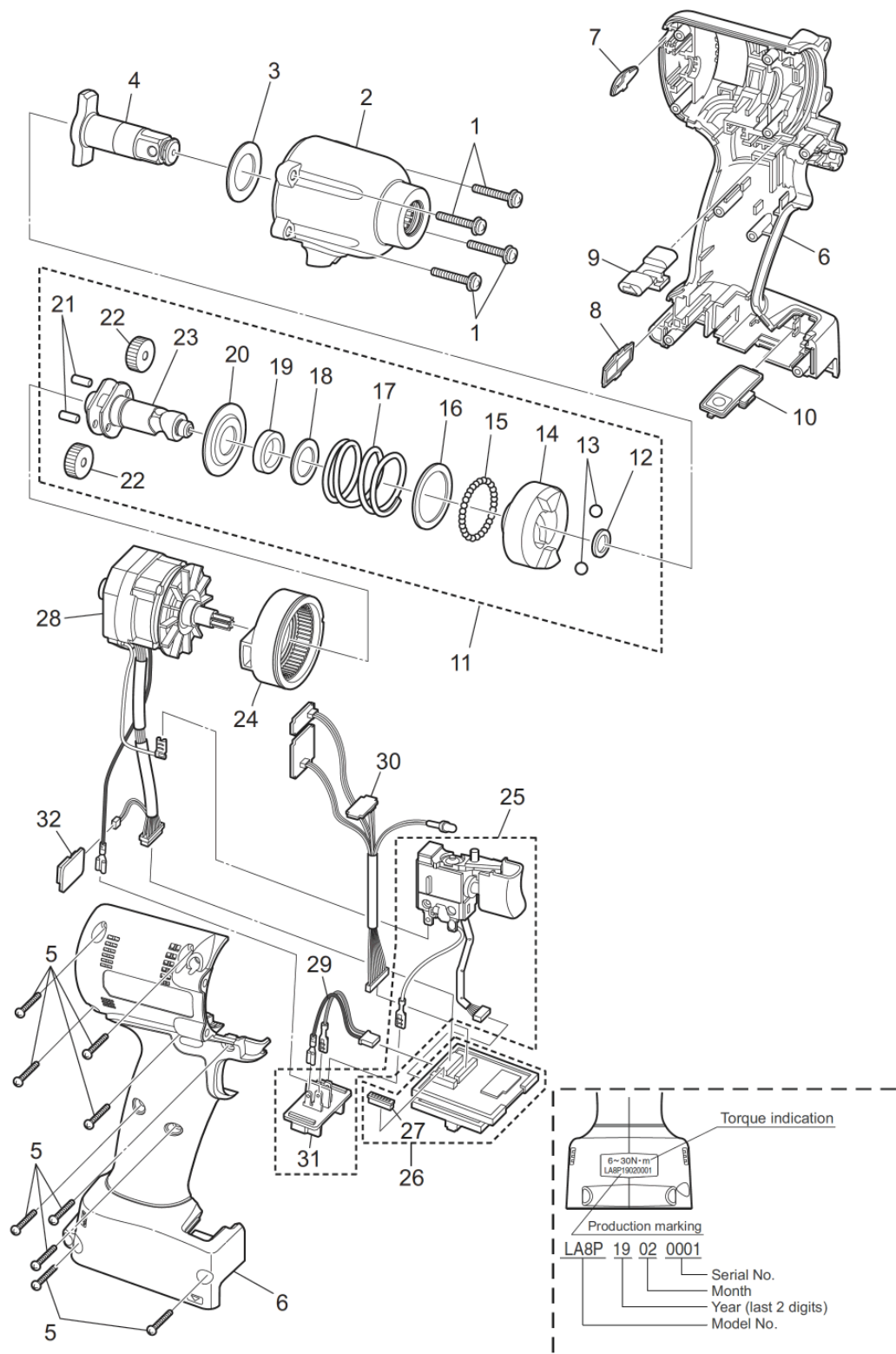


## Model No. : EYFLA8A Parts List

Change	Safety	Ref. No.	Part No.	Part Name & Description	Q'ty	Remarks
EYFLA8A						
		1	WEY6507K1166	C-TYPE RING	1	
		2	WEY6507L0856	THRUST PLATE	1	
		3	WEY6507L0196	BIT HOLDER SPRING	1	
		4	WEYFLA1AK379	BIT HOLDER	1	
		5	WEY6507L6976	STEEL BALL	2	(2PCS/PK)
		6	WEYFMA2CK607	DPT SEMS TAPPING SCREW	4	(5PCS/PK)
		7	WEYFLA7AS457	SHAFT COVER ASSEMBLY	1	
		8	WEYFLA7AS047	THRUST PLATE	1	
		9	WEYFLA7AS127	ANVIL	1	
		10	WEYFME1CK967	TAPPING SCREW	9	(5PCS/PK)
		11	WEYFLA8AK371	HOUSING AB SET	1	
		12	WEYFPA1JL377	TIGHTENING CONFIRMATION LAMP COVER	1	
		13	WEYFLA2AL337	DISCERNMENT PLATE	1	
		14	WEYFLA1AK327	F/R SELECTOR HANDLE	1	
		15	WEYFGA1NK337	OPERATION PLATE ASSEMBLY	1	
		16	WEYFLA8AS157	DRIVING SHAFT ASSMBLY	1	
		17	WEYFMA1JL087	THRUST PLATE	1	
		18	WEY7201L6966	STEEL BALL	2	(2PCS/PK)
		19	WEYFLA8AS177	HAMMER	1	
		20	WEY7205L6957	STEEL BALL	29	(29PCS/PK)
		21	WEYFLA1AL087	THRUST PLATE	1	
		22	WEYFLA8AL067	HAMMER SPRING	1	
		23	WEYFLA1AL097	THRUST PLATE	1	
		24	WEYFLA1AL037	CUSHION RUBBER	1	
		25	WEYFLA1AL137	SPRING FIXING PLATE	1	
		26	WEY6506L1346	PIN	2	(2PCS/PK)
		27	WEY2602B1357	PLANET GEAR	2	(2PCS/PK)
		28	WEYFLA3JL137	DRIVING SHAFT	1	
		29	WEYFLA1AL007	MOTOR MOUNTING PLATE ASSEMBLY	1	
		30	WEYFLA1AK207	SWITCH ASSEMBLY	1	
		31	WEYFMA2CL207	MODULE ASSEMBLY	1	
		32	WEYFGA1NW287	CONNECTOR	1	
		33	WEYFLA7AL107	MOTOR ASSEMBLY	1	
		34	WEYFLA1AL297	HARNESS	1	
		35	WEYFMA2CL287	SENSOR LED CIRCUIT ASSEMBLY	1	
		36	WEY7540L2157	BATTERY TERMINAL BLOCK	1	
		37	WEYFME1CL267	BUZZER BOARD	1	
		-	WEY001T8957	FLOIL GREASE	1	
		-	WEY002X8977	GREASE (DOUBREX)	1	



**Model No. : EYFLA8P    Exploded View**



## Model No. : EYFLA8P Parts List

Change	Safety	Ref. No.	Part No.	Part Name & Description	Q'ty	Remarks
EYFLA8P						
		1	WEYFMA2CK607	DPT SEMS TAPPING SCREW	4	(5PCS/PK)
		2	WEYFLA7AS457	SHAFT COVER ASSEMBLY	1	
		3	WEYFLA7AS047	THRUST PLATE	1	
		4	WEYFLA8PS127	ANVIL BLOCK	1	
		5	WEYFME1CK967	TAPPING SCREW	9	(5PCS/PK)
		6	WEYFLA8PK379	HOUSING AB SET	1	
		7	WEYFPA1JL377	TIGHTENING CONFIRMATION LAMP COVER	1	
		8	WEYFLA2AL337	DISCERNMENT PLATE	1	
		9	WEYFLA1AK327	F/R SELECTOR HANDLE	1	
		10	WEYFGA1NK337	OPERATION PLATE ASSEMBLY	1	
		11	WEYFLA8AS157	DRIVING SHAFT ASSMBLY	1	
		12	WEYFMA1JL087	THRUST PLATE	1	
		13	WEY7201L6966	STEEL BALL	2	(2PCS/PK)
		14	WEYFLA8AS177	HAMMER	1	
		15	WEY7205L6957	STEEL BALL	29	(29PCS/PK)
		16	WEYFLA1AL087	THRUST PLATE	1	
		17	WEYFLA8AL067	HAMMER SPRING	1	
		18	WEYFLA1AL097	THRUST PLATE	1	
		19	WEYFLA1AL037	CUSHION RUBBER	1	
		20	WEYFLA1AL137	SPRING FIXING PLATE	1	
		21	WEY6506L1346	PIN	2	(2PCS/PK)
		22	WEY6504L1357	PLANET GEAR	2	(2PCS/PK)
		23	WEYFLA3JL137	DRIVING SHAFT	1	
		24	WEYFLA1AL007	MOTOR MOUNTING PLATE ASSEMBLY	1	
		25	WEYFLA1AK207	SWITCH ASSEMBLY	1	
		26	WEYFMA2CL207	MODULE ASSEMBLY	1	
		27	WEYFGA1NW287	CONNECTOR	1	
		28	WEYFLA7AL107	MOTOR ASSEMBLY	1	
		29	WEYFLA1AL297	HARNESS	1	
		30	WEYFMA2CL287	SENSOR LED CIRCUIT ASSEMBLY	1	
		31	WEY7540L2157	BATTERY TERMINAL BLOCK	1	
		32	WEYFME1CL267	BUZZER BOARD	1	
		-	WEY001T8957	FLOIL GREASE	1	
		-	WEY002X8977	GREASE (DOUBREX)	1	