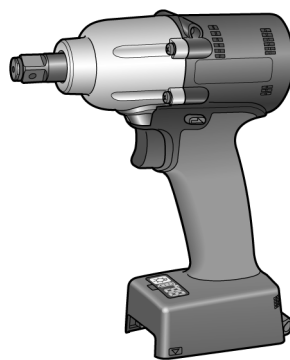


Service Manual

Cordless Impact Driver / Cordless Impact Wrench



Cordless Impact Driver



Cordless Impact Wrench

Model No. **EYFMA2CR**Model No. **EYFMA2PR**Model No. **EYFLA9CR**Model No. **EYFLA9PR**Model No. **EYFLA7AR**Model No. **EYFLA8AR**Model No. **EYFLA8CR**Model No. **EYFLA8PR**

Europe

Please file and use this manual together with the service manual for Model No. EYFLA9C, EYFMA2C, EYFLA9P, EYFMA2P, order No. PTD1902E58CE and EYFLA7A, EYFLA8A, EYFLA8P, order No. PTD1902E59AE.

WARNING

This service information is designed for experienced repair technicians only and is not designed for use by the general public. It does not contain warnings or cautions to advise non-technical individuals of potential dangers in attempting to service a product. Products powered by electricity should be serviced or repaired only by experienced professional technicians. Any attempt to service or repair the product or products dealt with in this service information by anyone else could result in serious injury or death.

IMPORTANT SAFETY NOTICE


There are special components used in this equipment which are important for safety. These parts are marked by  in the Schematic Diagrams, Circuit Board Diagrams, Exploded Views and Replacement Parts List. It is essential that these critical parts should be replaced with manufacturer's specified parts to prevent shock, fire or other hazards. Do not modify the original design without permission of manufacturer.

TABLE OF CONTENTS

	PAGE
1 Warning	2
2 Specifications	2
3 Troubleshooting Guide	3
4 Disassembly and Assembly Instructions	8

5 Exploded View and Replacement Parts List	10
--	----

Panasonic

© Panasonic corporation 2019. All rights reserved.
Unauthorized copying and distribution is a violation of law.

1 Warning

Caution:

- Pb free solder has a higher melting point than standard solder; Typically the melting point is 50 - 70°F (30 - 40°C) higher. Please use a soldering iron with temperature control and adjust it to 750 ± 20°F (400 ± 10°C). In case of using high temperature soldering iron, please be careful not to heat too long.
- Pb free solder will tend to splash when heated too high (about 1100°F / 600°C).

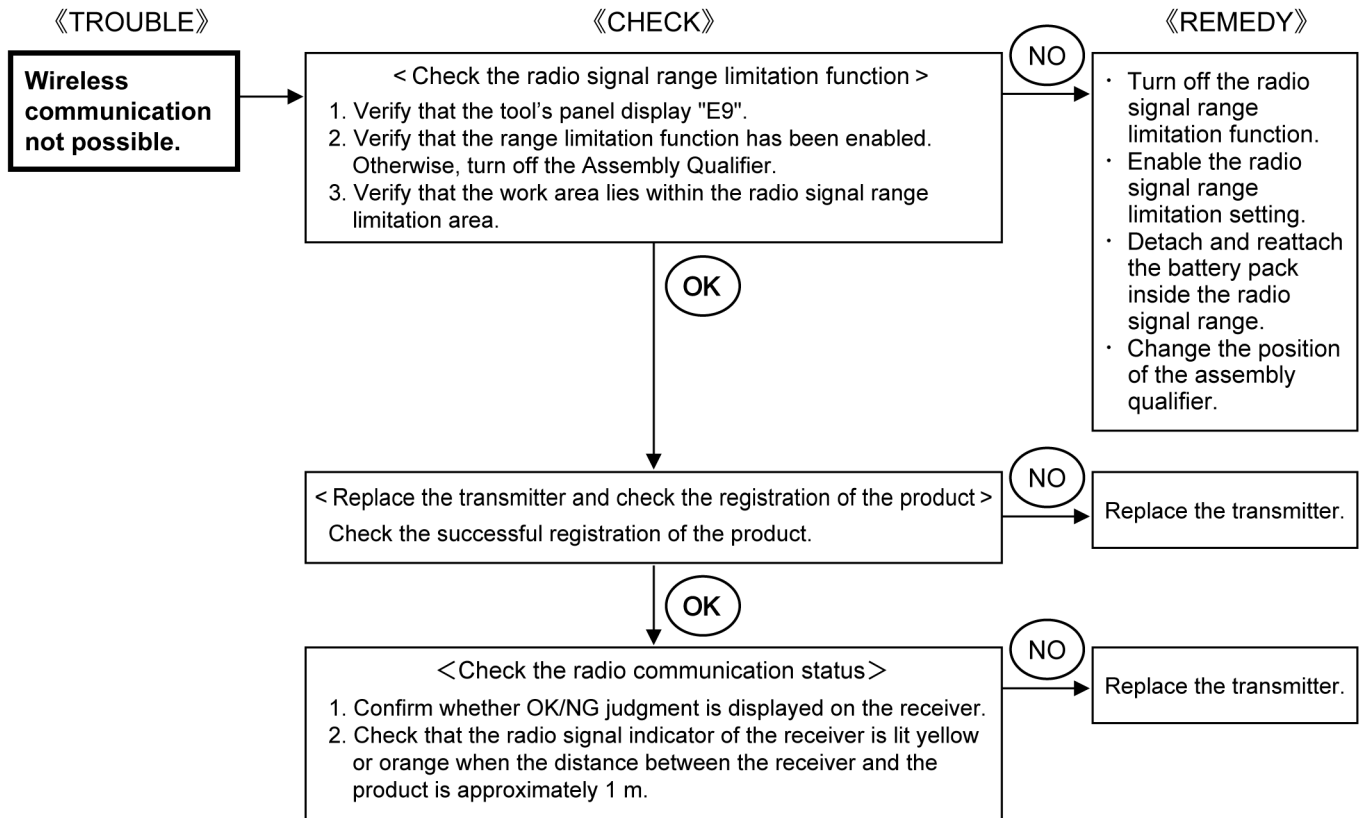
2 Specifications

MAIN UNIT

Model		EYFLA7		EYFLA8			EYFLA9		EYFMA2	
		AR		AR	CR	PR	CR	PR	CR	PR
Motor		10.8 V DC							14.4 V DC	
Chuck size	Single-ended	9 – 9.5 mm (23/64" – 3/8")			□9.5 mm (3/8")		□12.7 mm (1/2")		□12.7 mm (1/2")	
	Double-ended	12 mm (15/32")								
No load speed	Stage	1	0 – 950	1	0 – 1300		0 – 2300		0 – 2300	
		2	0 – 1250	2	0 – 1450					
		3	0 – 1450	3	0 – 1550					
		4 – 8	0 – 1550	4 – 40·F	0 – 2300					
		9 – 40·F	0 – 2300							
Impact per minute	Stage	1	0 – 1800	1	0 – 2400		0 – 2800		0 – 2900	
		2	0 – 2250	2	0 – 2500					
		3	0 – 2500	3	0 – 2800					
		4 – 8	0 – 2950	4 – 40·F	0 – 3300					
		9 – 40·F	0 – 3600							
Maximum torque		35 N·m (360 kgf-cm, 310 in-lbs)		80 N·m (820 kgf-cm, 709 in-lbs)		120 N·m (1224 kgf-cm, 1062 in-lbs)		185 N·m (1887 kgf-cm, 1637 in-lbs)		
Torque control function operating range		Approx. 3 – 22 N·m (31 – 224 kgf-cm, 27 – 195 in-lbs)		Approx. 6 – 30 N·m (61 – 306 kgf-cm, 53 – 266 in-lbs)		Approx. 20 – 60 N·m (204 – 612 kgf-cm, 177 – 529 in-lbs)		Approx. 25 – 120 N·m (255 – 1223 kgf-cm, 310 – 1058 in-lbs)		
Overall length		153 mm (6-1/32")			162 mm (6-3/8")		172 mm (6-25/32")		172 mm (6-25/32")	
Weight (with battery pack: EYFB30)		1.3 kg (2.9 lbs)		1.35 kg (3.0 lbs)		1.45 kg (3.2 lbs)		_____		
Weight (with battery pack: EYFB32)		1.15 kg (2.5 lbs)		1.15 kg (2.5 lbs)		1.3 kg (2.9 lbs)		_____		
Weight (with battery pack: EYFB41)		_____							1.4 kg (3.1 lbs)	
Weight (with battery pack: EYFB42)		_____							1.6 kg (3.5 lbs)	

3 Troubleshooting Guide

3.1. Troubleshooting Guide



3.2. Trial Operation (after checking Troubleshooting Guide)

3.2.1. Operation

- Check whether the ID setting has been properly configured after repair and reassembly.

【 Method of confirmation 】

1. Press D button on the remote control
2. Confirm the operation panel display

Display	Tool circuit
H7	EYFLA7AR
H8	EYFLA8AR/EYFLA8CR/EYFLA8PR
H9	EYFLA9CR/EYFLA9PR
H0	EYFMA2CR/EYFMA2PR

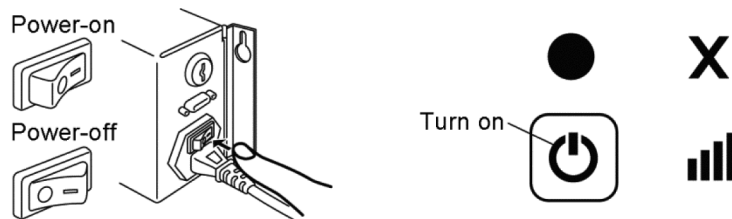
【 In the case of one way communication compatible assembly qualifier 】

- Confirmation of the radio communication.

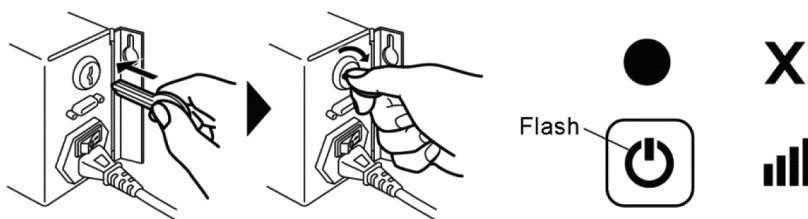
1. Registering the tool with the Assembly Qualifier.

- (1) Turn on the Assembly Qualifier.

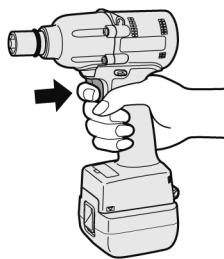
All indicators will turn on and off, leaving only the power indicator  on.



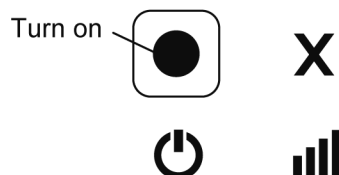
- (2) Insert a soft key into the key lock and turn to the right. The power indicator will flash, and the Assembly Qualifier will enter tool registration standby mode.




- (3) Remove the battery pack from the main tool and reinsert it and pull the trigger.

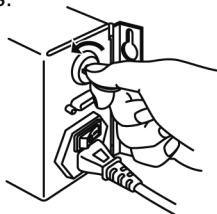


- (4) The green fastening accept indicator light will turn on.



- (5) Turn the Assembly Qualifier's soft key to the left.

The power indicator  will turn on and the Assembly Qualifier will enter receive mode, completing the registration process.



- (6) When the registration is completed, set the display of the product a position other than "F," turn the product ON and OFF with no load, and check that the X mark on the Assembly Qualifier is lit.
- (7) Next, check that the fastening accept indicator of the Assembly Qualifier is lit when the product has impacted and shut off.
- (8) Communicate at a position of 1 m to 3 m away and check that the fastening accept indicator of the Assembly Qualifier is lit green.

【 In the case of two-way communication compatible assembly qualifier 】

1. Press the C button four times.
2. Select “q1” with the +/- buttons on the remote control.

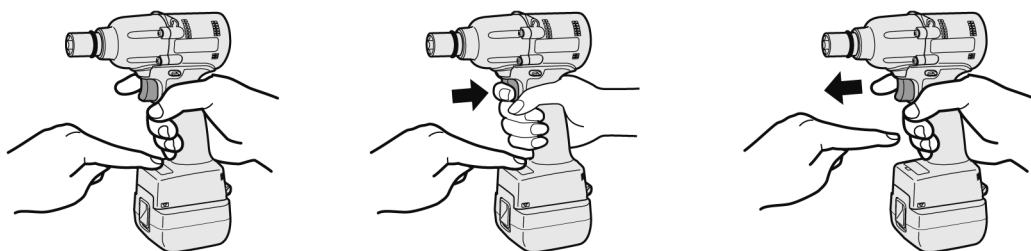


3. Check with the two-way communication compatible Assembly Qualifier that the product and the Assembly Qualifier are communicating with each other.

2. Configure the settings for Radio signal range limitation function.

【 Setting method 】

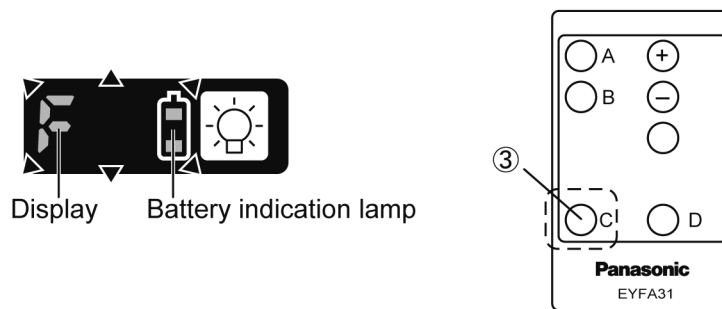
1. Turn off the control panel. (If the control panel is on, remove and then reinsert the battery pack).
2. Depress the switch while pushing the button and then release both the button and switch.



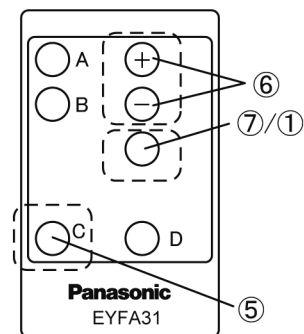
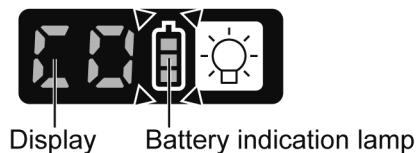
3. Press C button on the remote control.
4. After the LED light and tightening confirmation lamp have illuminated and the buzzer has rung, the control panel will flash and change to configuration mode.

Display : The letter “F” flashed on and off.

Battery indication lamp : The upper and lower bars of the battery flash on and off.



5. Press the C button three times.
 - Radio signal range limitation function on/off setting value will be displayed.



- Press the + and - buttons to set radio signal range limitation function on/off.

Display	Radio signal range limitation function mode
C0	OFF
C1	ON (Tool is not operational in the absence of communications with the Assembly Qualifier)

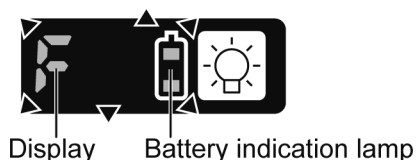
- Press the OK button (blue) to accept the new setting.
- Turn off the Assembly Qualifier. Operate the tool and verify that the range limitation function operates so that the tool stops (control panel display: E9).

3. Initialize the tool's settings.

- Perform steps 1 through 4 for setting the radio signal range limitation function in (2) above and press the OK button (blue) on the wireless remote control.
- Once the settings described in step 1 are complete, the control panel "F" indicator will stop flashing and light up continuously, and the initialization settings will take effect.
(All the settings will have been reverted to their factory defaults.)

Display : The letter "F" light up

Battery indication lamp : The upper and lower bars of the battery flash on and off



Caution:

- When the tool stops, the current setting values will be displayed for about 2 minutes.
- If the control panel is turned off, you will not be able to check the settings. In this case, pull the trigger once to turn on the control panel.

Initializing all settings

Factory settings

- Torque clutch setting: "F" (torque control function off)
- Interval setting: U or 0 (OFF)
- Snug point detection level → L1
- Cross thread reduction function → R0
- Rundown error detecting function → 0
- Tightening time reminder → 0
- Radio signal range limitation function → C0
- Buzzer setting → b0
- LED light setting → d1
- Speed control setting → P0
- Undetect time setting → J0
- Impact speed setting corresponding to the length of the socket used → h0
- One-way and two-way communication function → q0

4. Remote Control Functions

【 Setting the tool 】

Configuration mode changes with each press of buttons.

Setting radio signal is only available for wireless communication tool.

	Settings			
A	Torque (1-40·F)	▶ Snug point (L1-L7)	▶ Buzzer (b0/b1/b2)	▶ Undetected time (J0/0.1-30)
B	LED light (L1·d1/L2·d2)	▶ Rundown error (0-30)	▶ Speed control (P0/P1)	
C	Format (F)	▶ Maintenance (0-99)	▶ Radio signal (C0/C1)	▶ 1-way/2-way (q0/q1)
D	Cross thread (R0/R1)	▶ Interval set (U-U9)	▶ Impact speed (h0/h1/h2)	
O	OK			

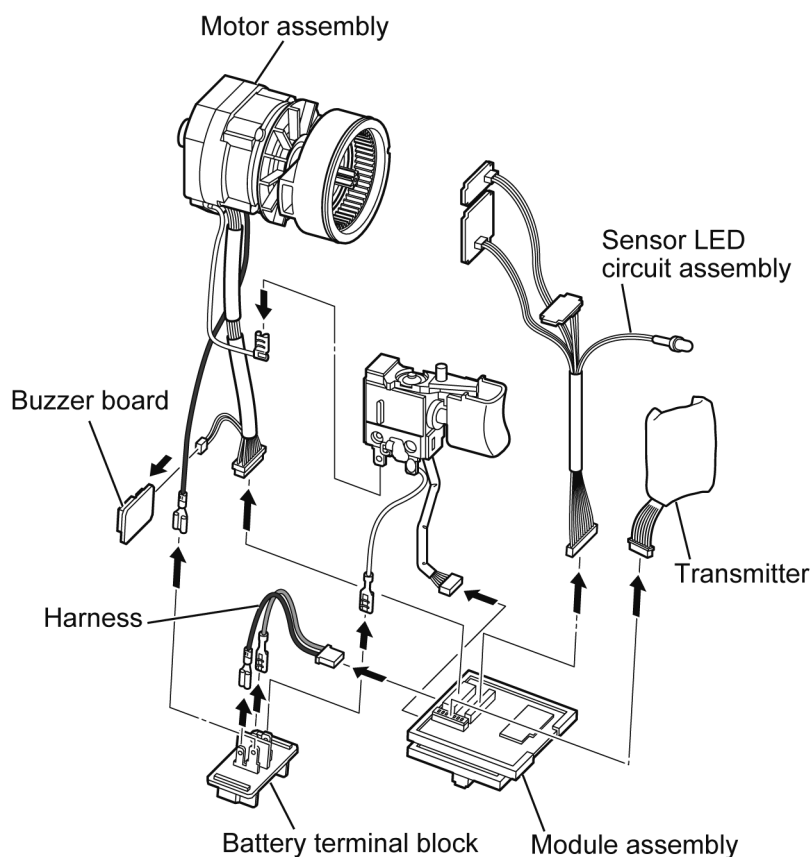
3.2.2. Integrity

- With the switch activated, shake the tool back and forth and up and down and verify that its sound does not change excessively.
- Verify that there is no dirt, scratching, or other damage on the tool's exterior from the repair process.(Check the shaft cover assembly carefully for surface scratches since it is made of aluminum.)

4 Disassembly and Assembly Instructions

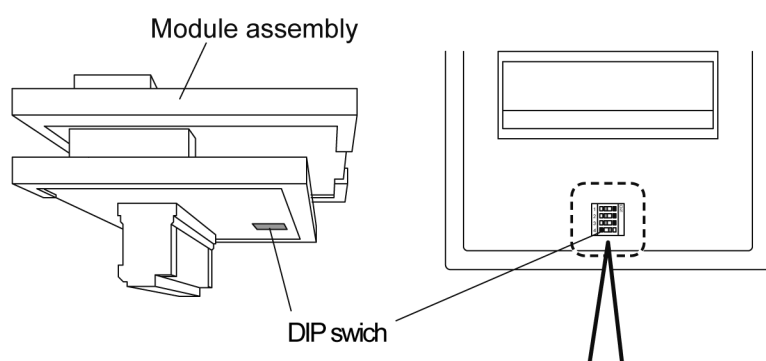
*To reduce the risk of injury, always remove battery pack before removing/installing the tool.

4.1. How to remove the module assembly.



1. Disconnect the motor assembly's 19-pin connector and the transmitter's 7-pin connector from the top of the module assembly's control circuit board.
2. Disconnect the switch's 6-pin connector and the harness's 2-pin connector from the bottom of the control circuit board on the module assembly.
3. Disconnect the harness, the motor assembly's black lead wire and the switch's white lead wire from the battery terminal block.
4. Disconnect the buzzer board's 2-pin connector.
5. Remove the buzzer board from the motor assembly.

4.2. Checking and setting the Module assembly's DIP switches.



Check the settings of the DIP switches on the bottom of the module assembly's control switch.

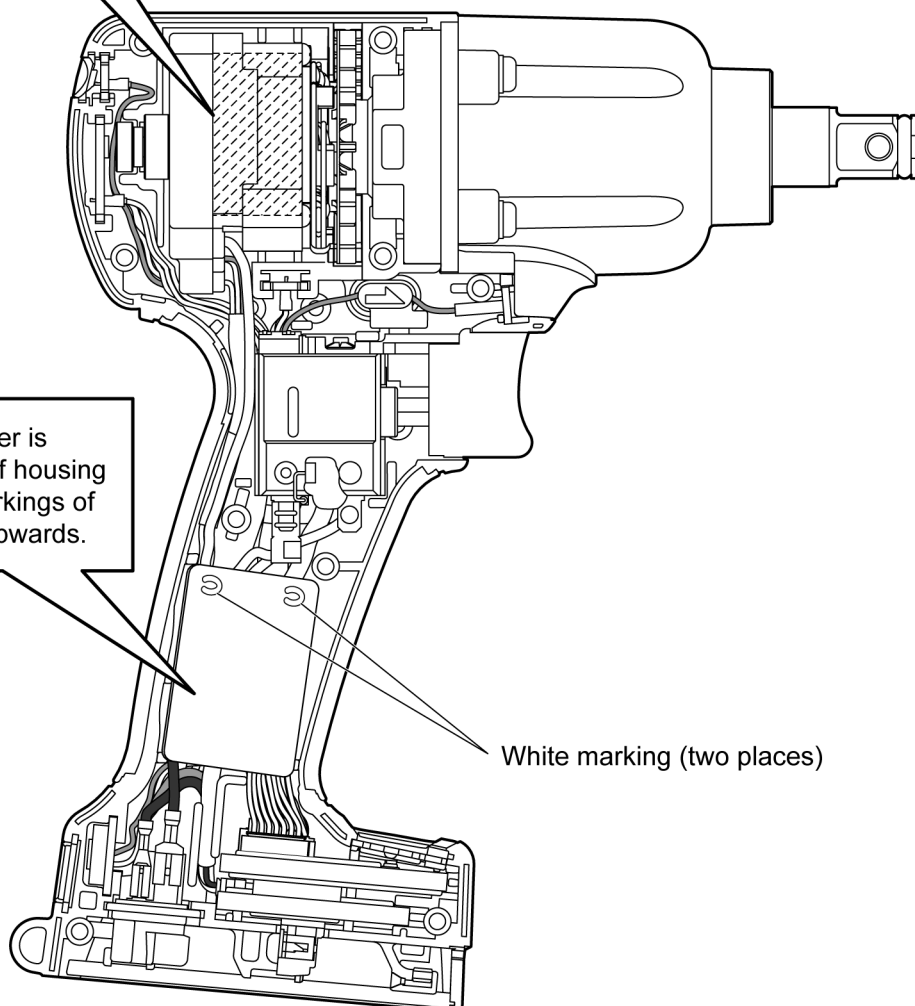
*The Module assembly as a service component is set for EYFMA2CR.

Model. EYFLA7AR				Model. EYFLA8AR/8CR/8PR				Model. EYFLA9CR/9PR				Model. EYFMA2CR/2PR			
1	<input checked="" type="checkbox"/>	<input type="checkbox"/>	<input type="checkbox"/>	<input type="checkbox"/>	<input checked="" type="checkbox"/>	<input type="checkbox"/>	<input type="checkbox"/>	1	<input type="checkbox"/>	<input type="checkbox"/>	<input checked="" type="checkbox"/>	<input type="checkbox"/>	<input type="checkbox"/>	<input checked="" type="checkbox"/>	<input type="checkbox"/>
2	<input type="checkbox"/>	<input type="checkbox"/>	<input checked="" type="checkbox"/>	<input type="checkbox"/>	<input checked="" type="checkbox"/>	<input type="checkbox"/>	<input type="checkbox"/>	2	<input type="checkbox"/>	<input type="checkbox"/>	<input checked="" type="checkbox"/>	<input type="checkbox"/>	<input type="checkbox"/>	<input checked="" type="checkbox"/>	<input type="checkbox"/>
3	<input type="checkbox"/>	<input type="checkbox"/>	<input type="checkbox"/>	<input type="checkbox"/>	<input type="checkbox"/>	<input checked="" type="checkbox"/>	<input type="checkbox"/>	3	<input type="checkbox"/>	<input type="checkbox"/>	<input type="checkbox"/>	<input type="checkbox"/>	<input type="checkbox"/>	<input type="checkbox"/>	<input checked="" type="checkbox"/>
4	<input type="checkbox"/>	<input type="checkbox"/>	<input type="checkbox"/>	<input type="checkbox"/>	<input type="checkbox"/>	<input type="checkbox"/>	<input checked="" type="checkbox"/>	4	<input type="checkbox"/>	<input type="checkbox"/>	<input type="checkbox"/>	<input checked="" type="checkbox"/>	<input type="checkbox"/>	<input type="checkbox"/>	<input checked="" type="checkbox"/>
<Condition> 1: ON 2: OFF 3: OFF 4: OFF				<Condition> 1: OFF 2: ON 3: OFF 4: OFF				<Condition> 1: OFF 2: OFF 3: ON 4: OFF				<Condition> 1: OFF 2: OFF 3: OFF 4: ON			

4.3. Wiring and Assembly Points.

Check that the rubber vibration isolators are affixed to the hatched parts (two places) of the housing (Only for EYFMA2CR / EYFMA2PR / EYFLA9CR / EYFLA9PR).

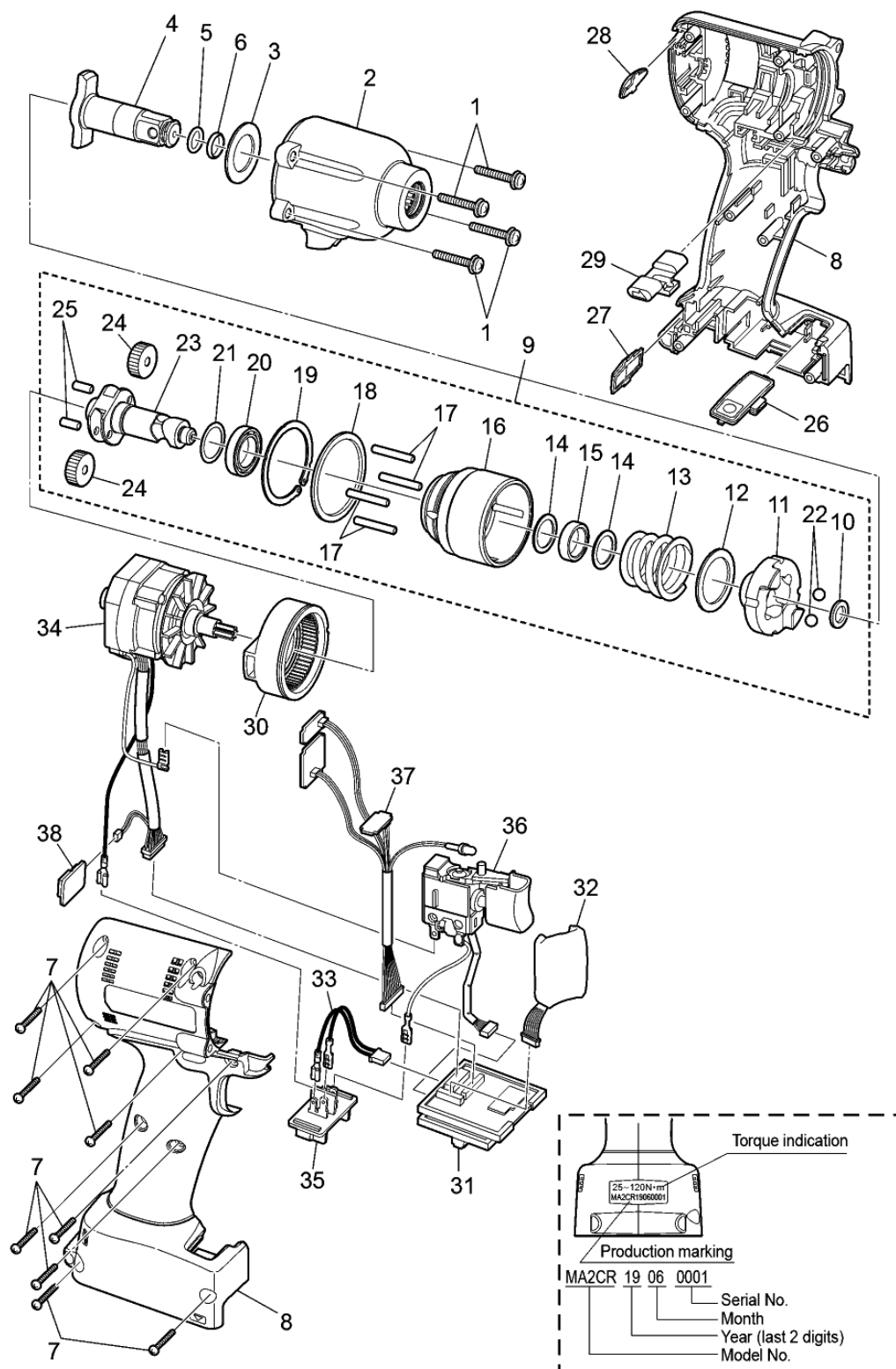
Check that the transmitter is attached inside the rib of housing A with the two white markings of the transmitter placed upwards.



White marking (two places)

5 Exploded View and Replacement Parts List

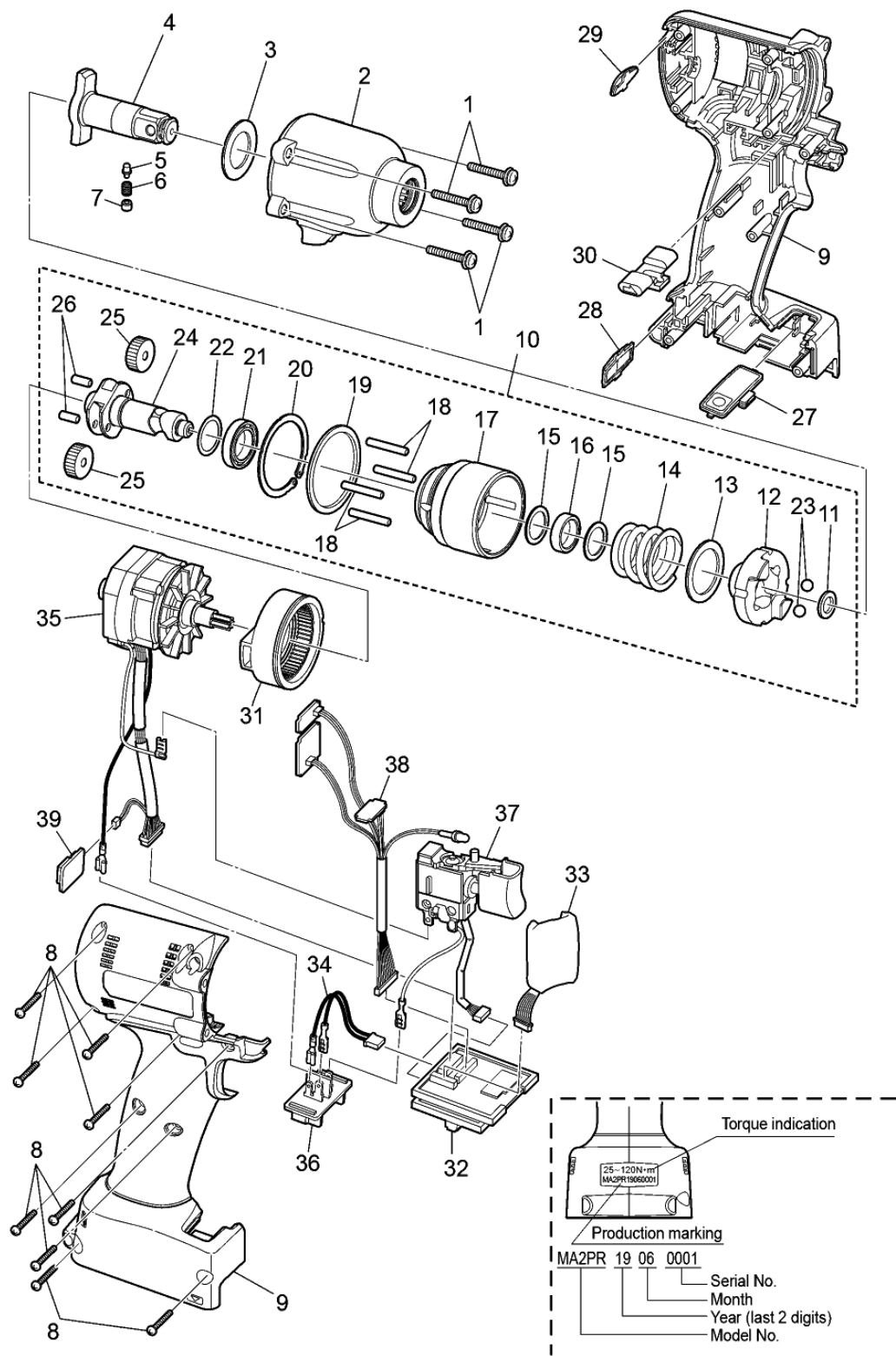
Model No. : EYFMA2CR Exploded View



Model No. : EYFMA2CR Parts List

Change	Safety	Ref. No.	Part No.	Part Name & Description	Q'ty	Remarks
EYFMA2CR						
		1	WEYFMA2CK607	DPT SEMS TAPPING SCREW	4	(5PCS/PK)
		2	WEYFMA2CS337	SHAFT COVER ASSEMBLY	1	
		3	WEYFMA2CS047	THRUST PLATE	1	
		4	WEYFMA2CS127	ANVIL	1	
		5	WEY7552K0987	O-RING	1	
		6	WEY7552K0187	RETAINER RING	1	
		7	WEYFME1CK967	TAPPING SCREW	9	(5PCS/PK)
		8	WEYFMA2CK309	HOUSING AB SET	1	
		9	WEYFMA2CS137	DRIVING SHAFT ASSEMBLY	1	
		10	WEYFMA1JL087	THRUST PLATE	1	
		11	WEYFMA2CS117	MAIN HAMMER	1	
		12	WEYFMA2CS057	THRUST PLATE	1	
		13	WEY7541L0217	HAMMER SPRING	1	
		14	WEYFMA2CK057	THRUST PLATE	2	(2PCS/PK)
		15	WEYFLA3JL037	CUSHION RUBBER	1	
		16	WEYFMA2CS177	SUB HAMMER	1	
		17	WEYFMA2CS007	PIN	4	(4PCS/PK)
		18	WEYFMA2CK067	THRUST PLATE	1	
		19	WEYFMA2CS017	RETAINING RING	1	
		20	WEYFMA2CS467	BEARING	1	
		21	WEYFMA2CK087	THRUST PLATE	1	
		22	WEYFMA2CS147	STEEL BALL	2	(2PCS/PK)
		23	WEYFMA2CS157	DRIVING SHAFT	1	
		24	WEY6504L1357	PLANET GEAR	2	(2PCS/PK)
		25	WEY6506L1346	PIN	2	(2PCS/PK)
		26	WEYFGA1NK337	OPERATION PLATE ASSEMBLY	1	
		27	WEYFMA1JL337	DISCERNMENT PLATE	1	
		28	WEYFPA1JL377	TIGHTENING CONFIRMATION LAMP COVER	1	
		29	WEYFLA1AK327	F/R SELECTOR HANDLE	1	
		30	WEYFLA1AL007	MOTOR MOUNTING PLATE ASSEMBLY	1	
		31	WEYFMA2CR207	MODULE ASSEMBLY	1	
		32	WEYFMA2CR278	TRANSMITTER	1	
		33	WEYFLA1AL297	HARNESS	1	
		34	WEYFMA2CL477	MOTOR ASSEMBLY	1	
		35	WEY7540L2157	BATTERY TERMINAL BLOCK	1	
		36	WEYFLA1AK207	SWITCH ASSEMBLY	1	
		37	WEYFMA2CL287	SENSOR LED CIRCUIT ASSEMBLY	1	
		38	WEYFME1CL267	BUZZER BOARD	1	
		-	WEY004X8967	CALFOREX	1	
		-	WEY001T8957	FLOIL GREASE	1	
		-	WEY002X8977	GREASE (DOUBREX)	1	

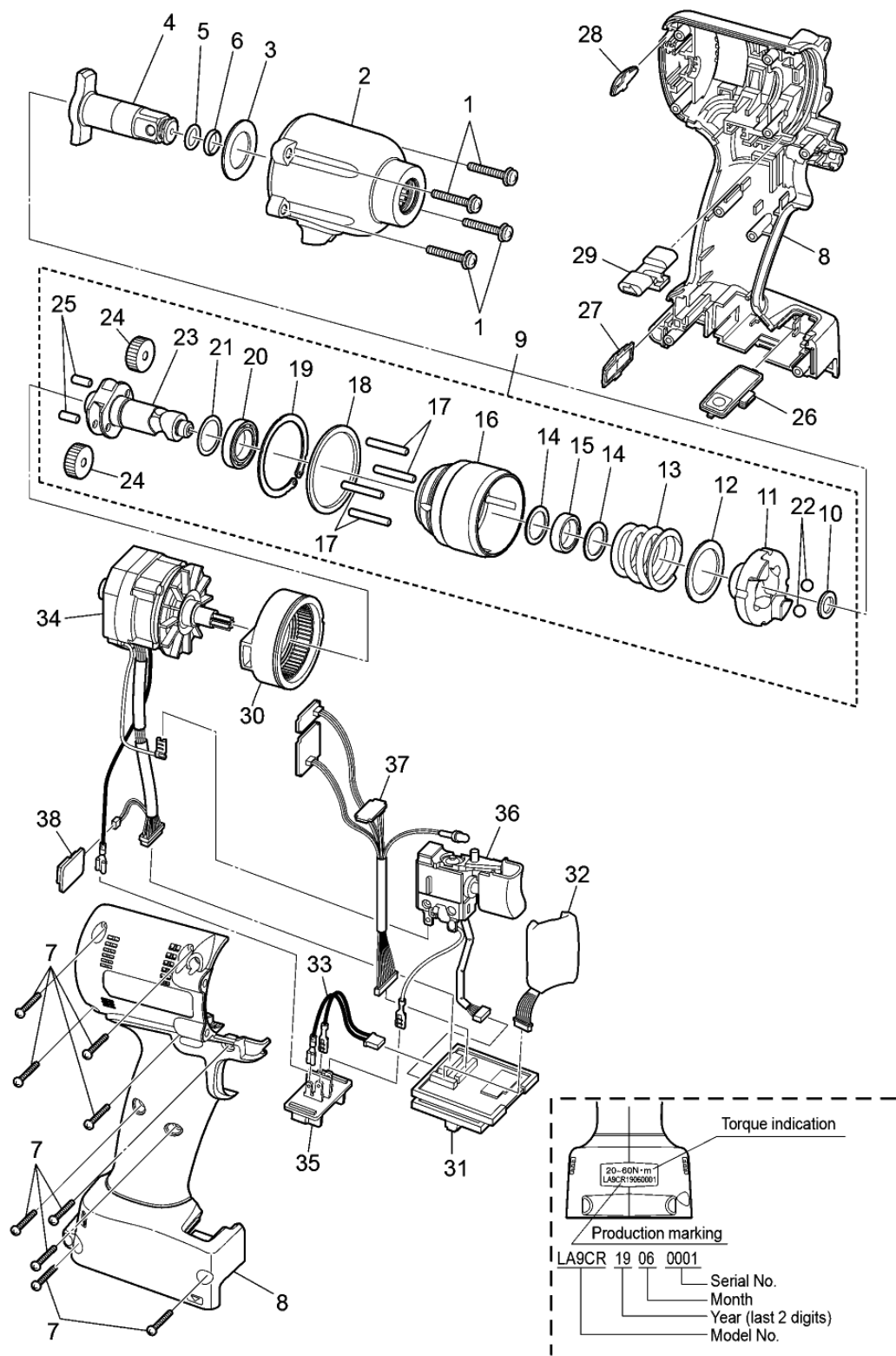
Model No. : EYFMA2PR Exploded View



Model No. : EYFMA2PR Parts List

Change	Safety	Ref. No.	Part No.	Part Name & Description	Q'ty	Remarks
EYFMA2PR						
		1	WEYFMA2CK607	DPT SEMS TAPPING SCREW	4	(5PCS/PK)
		2	WEYFMA2CS337	SHAFT COVER ASSEMBLY	1	
		3	WEYFMA2CS047	THRUST PLATE	1	
		4	WEYFMA2PS127	ANVIL	1	
		5	WEYFNA1PL050	DETENT PIN	1	
		6	WEYFNA1PL097	DETENT PIN SPRING	1	
		7	WEYFNA1PL035	PRESS FIT PIN	1	
		8	WEYFME1CK967	TAPPING SCREW	9	(5PCS/PK)
		9	WEYFMA2PK309	HOUSING AB SET	1	
		10	WEYFMA2CS137	DRIVING SHAFT ASSEMBLY	1	
		11	WEYFMA1JL087	THRUST PLATE	1	
		12	WEYFMA2CS117	MAIN HAMMER	1	
		13	WEYFMA2CS057	THRUST PLATE	1	
		14	WEY7541L0217	HAMMER SPRING	1	
		15	WEYFMA2CK057	THRUST PLATE	2	(2PCS/PK)
		16	WEYFLA3JL037	CUSHION RUBBER	1	
		17	WEYFMA2CS177	SUB HAMMER	1	
		18	WEYFMA2CS007	PIN	4	(4PCS/PK)
		19	WEYFMA2CK067	THRUST PLATE	1	
		20	WEYFMA2CS017	RETAINING RING	1	
		21	WEYFMA2CS467	BEARING	1	
		22	WEYFMA2CK087	THRUST PLATE	1	
		23	WEYFMA2CS147	STEEL BALL	2	(2PCS/PK)
		24	WEYFMA2CS157	DRIVING SHAFT	1	
		25	WEY6504L1357	PLANET GEAR	2	(2PCS/PK)
		26	WEY6506L1346	PIN	2	(2PCS/PK)
		27	WEYFGA1NK337	OPERATION PLATE ASSEMBLY	1	
		28	WEYFMA1JL337	DISCERNMENT PLATE	1	
		29	WEYFPA1JL377	TIGHTENING CONFIRMATION LAMP COVER	1	
		30	WEYFLA1AK327	F/R SELECTOR HANDLE	1	
		31	WEYFLA1AL007	MOTOR MOUNTING PLATE ASSEMBLY	1	
		32	WEYFMA2CR207	MODULE ASSEMBLY	1	
		33	WEYFMA2CR278	TRANSMITEER	1	
		34	WEYFLA1AL297	HARNESS	1	
		35	WEYFMA2CL477	MOTOR ASSEMBLY	1	
		36	WEY7540L2157	BATTERY TERMINAL BLOCK	1	
		37	WEYFLA1AK207	SWITCH ASSEMBLY	1	
		38	WEYFMA2CL287	SENSOR LED CIRCUIT ASSEMBLY	1	
		39	WEYFME1CL267	BUZZER BOARD	1	
		-	WEY004X8967	CALFOREX	1	
		-	WEY001T8957	FLOIL GREASE	1	
		-	WEY002X8977	GREASE (DOUBREX)	1	

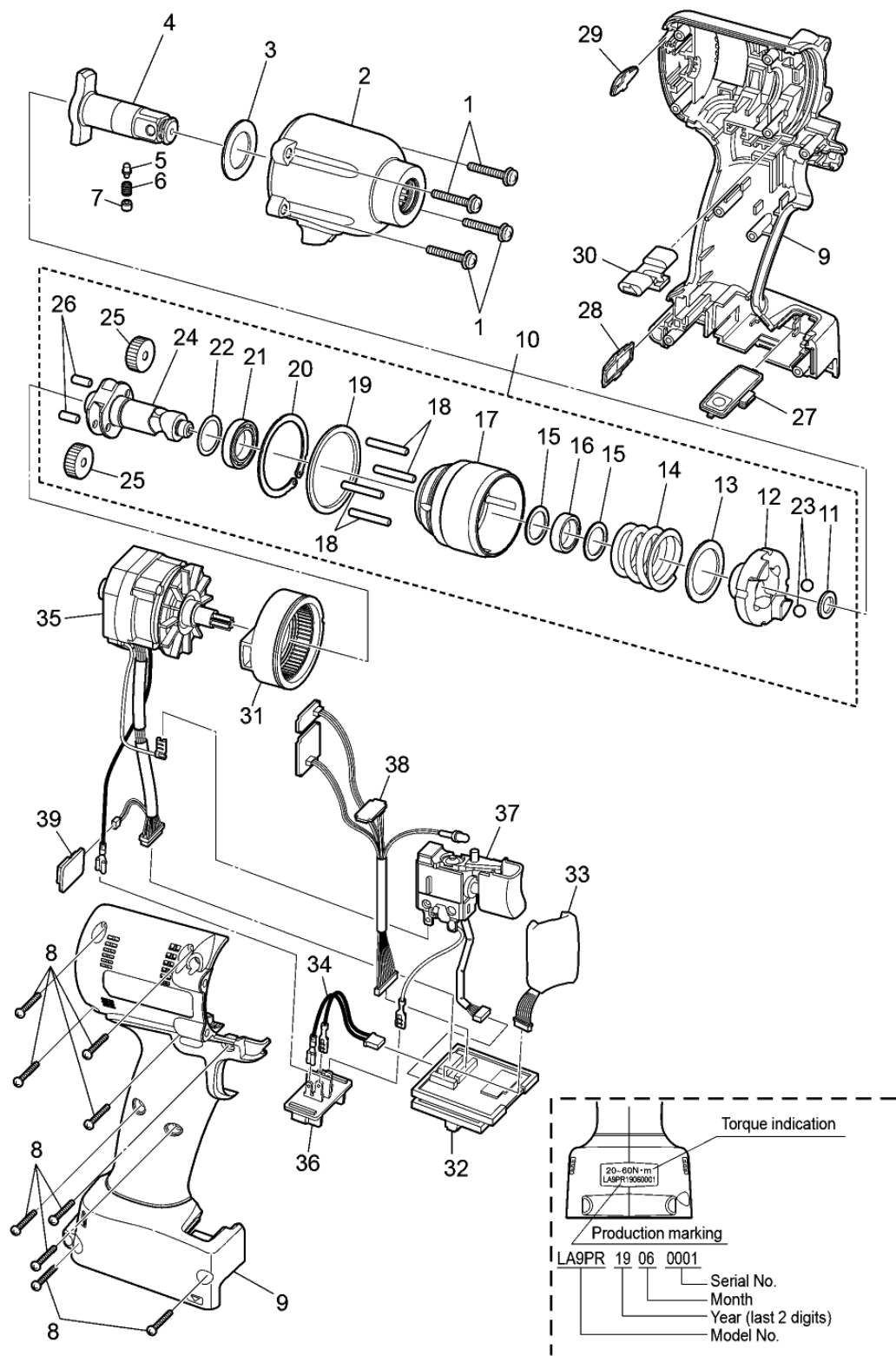
Model No. : EYFLA9CR Exploded View



Model No. : EYFLA9CR Parts List

Change	Safety	Ref. No.	Part No.	Part Name & Description	Q'ty	Remarks
EYFLA9CR						
		1	WEYFMA2CK607	DPT SEMS TAPPING SCREW	4	(5PCS/PK)
		2	WEYFMA2CS337	SHAFT COVER ASSEMBLY	1	
		3	WEYFMA2CS047	THRUST PLATE	1	
		4	WEYFMA2CS127	ANVIL	1	
		5	WEY7552K0987	O-RING	1	
		6	WEY7552K0187	RETAINER RING	1	
		7	WEYFME1CK967	TAPPING SCREW	9	(5PCS/PK)
		8	WEYFLA9CK309	HOUSING AB SET	1	
		9	WEYFLA9CS137	DRIVING SHAFT ASSEMBLY	1	
		10	WEYFMA1JL087	THRUST PLATE	1	
		11	WEYFLA9CS117	MAIN HAMMER	1	
		12	WEYFMA2CS057	THRUST PLATE	1	
		13	WEY7541L0217	HAMMER SPRING	1	
		14	WEYFMA2CK057	THRUST PLATE	2	(2PCS/PK)
		15	WEYFLA3JL037	CUSHION RUBBER	1	
		16	WEYFLA9CS177	SUB HAMMER	1	
		17	WEYFMA2CS007	PIN	4	(4PCS/PK)
		18	WEYFMA2CK067	THRUST PLATE	1	
		19	WEYFMA2CS017	RETAINING RING	1	
		20	WEYFMA2CS467	BEARING	1	
		21	WEYFMA2CK087	THRUST PLATE	1	
		22	WEYFMA2CS147	STEEL BALL	2	(2PCS/PK)
		23	WEYFMA2CS157	DRIVING SHAFT	1	
		24	WEY6504L1357	PLANET GEAR	2	(2PCS/PK)
		25	WEY6506L1346	PIN	2	(2PCS/PK)
		26	WEYFGA1NK337	OPERATION PLATE ASSEMBLY	1	
		27	WEYFMA1JL337	DISCERNMENT PLATE	1	
		28	WEYFPA1JL377	TIGHTENING CONFIRMATION LAMP COVER	1	
		29	WEYFLA1AK327	F/R SELECTOR HANDLE	1	
		30	WEYFLA1AL007	MOTOR MOUNTING PLATE ASSEMBLY	1	
		31	WEYFMA2CR207	MODULE ASSEMBLY	1	
		32	WEYFMA2CR278	TRANSMITTER	1	
		33	WEYFLA1AL297	HARNESS	1	
		34	WEYFLA9CL477	MOTOR ASSEMBLY	1	
		35	WEY7540L2157	BATTERY TERMINAL BLOCK	1	
		36	WEYFLA1AK207	SWITCH ASSEMBLY	1	
		37	WEYFMA2CL287	SENSOR LED CIRCUIT ASSEMBLY	1	
		38	WEYFME1CL267	BUZZER BOARD	1	
		-	WEY004X8967	CALFOREX	1	
		-	WEY001T8957	FLOIL GREASE	1	
		-	WEY002X8977	GREASE (DOUBREX)	1	

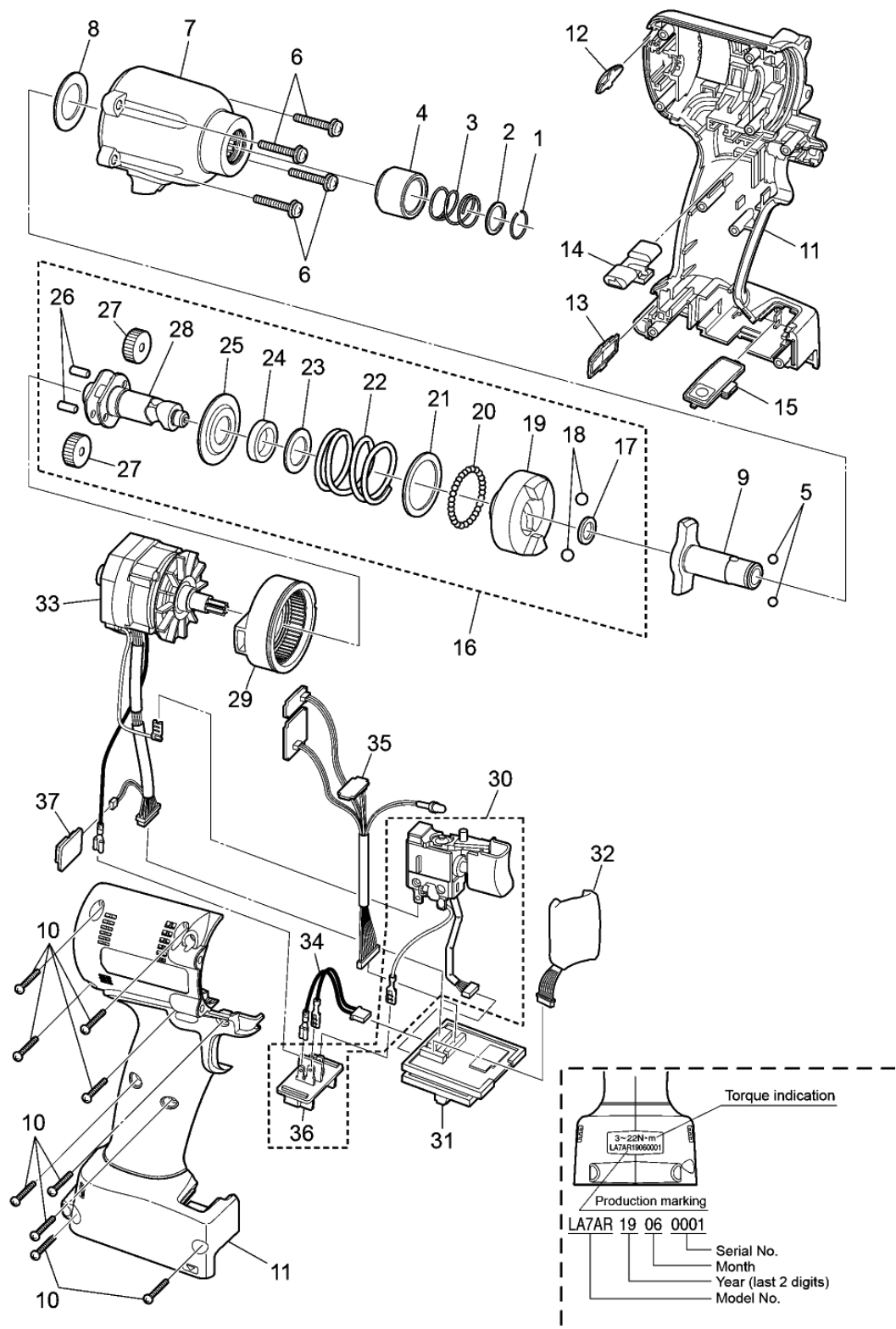
Model No. : EYFLA9PR Exploded View



Model No. : EYFLA9PR Parts List

Change	Safety	Ref. No.	Part No.	Part Name & Description	Q'ty	Remarks
EYFLA9PR						
		1	WEYFMA2CK607	DPT SEMS TAPPING SCREW	4	(5PCS/PK)
		2	WEYFMA2CS337	SHAFT COVER ASSEMBLY	1	
		3	WEYFMA2CS047	THRUST PLATE	1	
		4	WEYFMA2PS127	ANVIL	1	
		5	WEYFNA1PL050	DETENT PIN	1	
		6	WEYFNA1PL097	DETENT PIN SPRING	1	
		7	WEYFNA1PL035	PRESS FIT PIN	1	
		8	WEYFME1CK967	TAPPING SCREW	9	(5PCS/PK)
		9	WEYFLA9PK309	HOUSING AB SET	1	
		10	WEYFLA9CS137	DRIVING SHAFT ASSEMBLY	1	
		11	WEYFMA1JL087	THRUST PLATE	1	
		12	WEYFLA9CS117	MAIN HAMMER	1	
		13	WEYFMA2CS057	THRUST PLATE	1	
		14	WEY7541L0217	HAMMER SPRING	1	
		15	WEYFMA2CK057	THRUST PLATE	2	(2PCS/PK)
		16	WEYFLA3JL037	CUSHION RUBBER	1	
		17	WEYFLA9CS177	SUB HAMMER	1	
		18	WEYFMA2CS007	PIN	4	(4PCS/PK)
		19	WEYFMA2CK067	THRUST PLATE	1	
		20	WEYFMA2CS017	RETAINING RING	1	
		21	WEYFMA2CS467	BEARING	1	
		22	WEYFMA2CK087	THRUST PLATE	1	
		23	WEYFMA2CS147	STEEL BALL	2	(2PCS/PK)
		24	WEYFMA2CS157	DRIVING SHAFT	1	
		25	WEY6504L1357	PLANET GEAR	2	(2PCS/PK)
		26	WEY6506L1346	PIN	2	(2PCS/PK)
		27	WEYFGA1NK337	OPERATION PLATE ASSEMBLY	1	
		28	WEYFLA3JL337	DISCERNMENT PLATE	1	
		29	WEYFPA1JL377	TIGHTENING CONFIRMATION LAMP COVER	1	
		30	WEYFLA1AK327	F/R SELECTOR HANDLE	1	
		31	WEYFLA1AL007	MOTOR MOUNTING PLATE ASSEMBLY	1	
		32	WEYFMA2CR207	MODULE ASSEMBLY	1	
		33	WEYFMA2CR278	TRANSMITTER	1	
		34	WEYFLA1AL297	HARNESS	1	
		35	WEYFLA9CL477	MOTOR ASSEMBLY	1	
		36	WEY7540L2157	BATTERY TERMINAL BLOCK	1	
		37	WEYFLA1AK207	SWITCH ASSEMBLY	1	
		38	WEYFMA2CL287	SENSOR LED CIRCUIT ASSEMBLY	1	
		39	WEYFME1CL267	BUZZER BOARD	1	
		-	WEY004X8967	CALFOREX	1	
		-	WEY001T8957	FLOIL GREASE	1	
		-	WEY002X8977	GREASE (DOUBREX)	1	

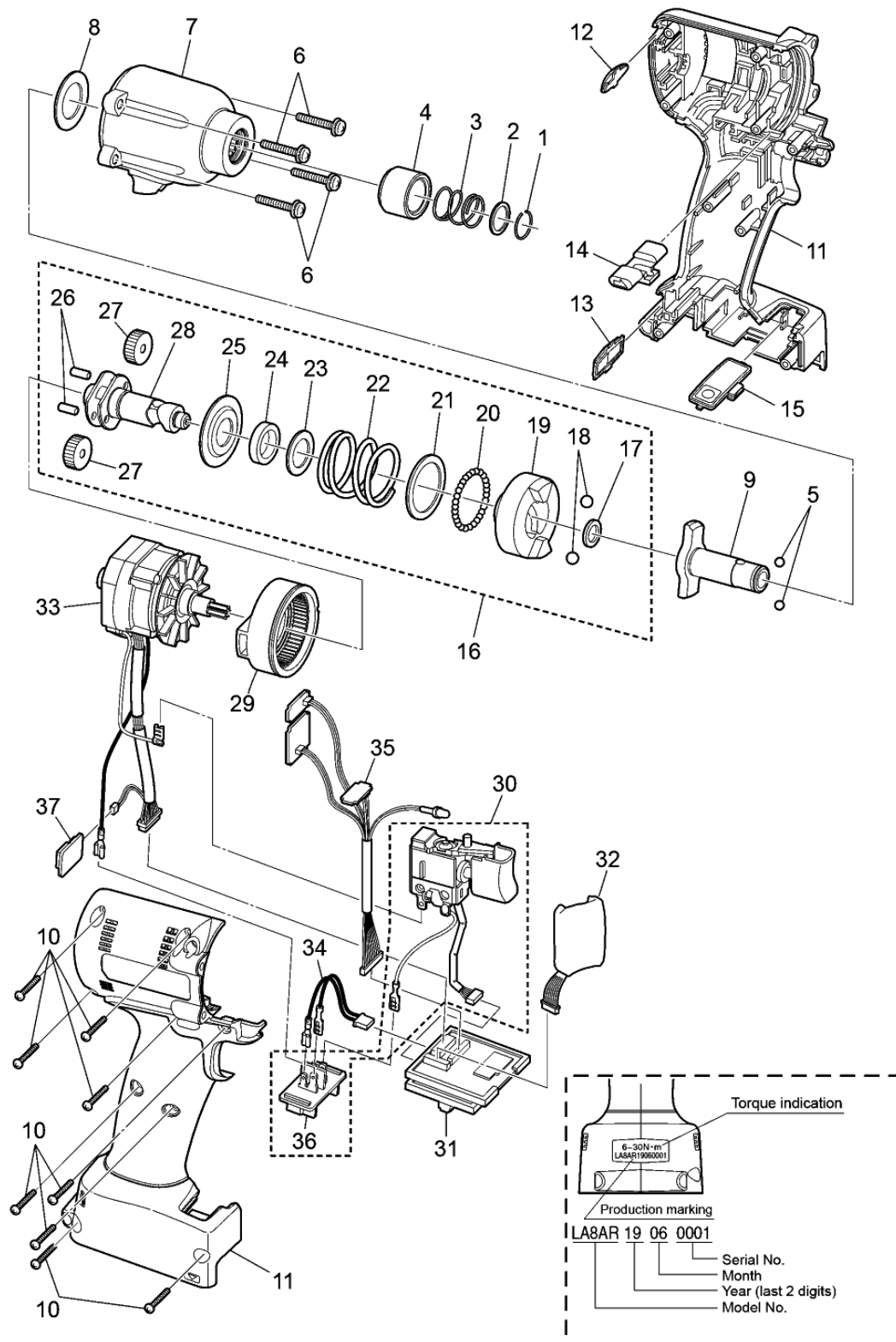
Model No. : EYFLA7AR Exploded View



Model No. : EYFLA7AR Parts List

Change	Safety	Ref. No.	Part No.	Part Name & Description	Q'ty	Remarks
EYFLA7AR						
		1	WEY6507K1166	C-TYPE RING	1	
		2	WEY6507L0856	THRUST PLATE	1	
		3	WEY6507L0196	BIT HOLDER SPRING	1	
		4	WEYFLA1AK379	BIT HOLDER	1	
		5	WEY6507L6976	STEEL BALL	2	(2PCS/PK)
		6	WEYFMA2CK607	DPT SEMS TAPPING SCREW	4	(5PCS/PK)
		7	WEYFLA7AS457	SHAFT COVER ASSEMBLY	1	
		8	WEYFLA7AS047	THRUST PLATE	1	
		9	WEYFLA7AS127	ANVIL	1	
		10	WEYFME1CK967	TAPPING SCREW	9	(5PCS/PK)
		11	WEYFLA7AK309	HOUSING AB SET	1	
		12	WEYFPA1JL377	TIGHTENING CONFIRMATION LAMP COVER	1	
		13	WEYFLA1AL337	DISCERNMENT PLATE	1	
		14	WEYFLA1AK327	F/R SELECTOR HANDLE	1	
		15	WEYFGA1NK337	OPERATION PLATE ASSEMBLY	1	
		16	WEYFLA7AS157	DRIVING SHAFT ASSMBLY	1	
		17	WEYFMA1JL087	THRUST PLATE	1	
		18	WEY7201L6966	STEEL BALL	2	(2PCS/PK)
		19	WEYFLA7AS177	HAMMER	1	
		20	WEY7205L6957	STEEL BALL	29	(29PCS/PK)
		21	WEYFLA1AL087	THRUST PLATE	1	
		22	WEYFLA1AL017	HAMMER SPRING	1	
		23	WEYFLA1AL097	THRUST PLATE	1	
		24	WEYFLA1AL037	CUSHION RUBBER	1	
		25	WEYFLA1AL137	SPRING FIXING PLATE	1	
		26	WEY6506L1346	PIN	2	(2PCS/PK)
		27	WEY2602B1357	PLANET GEAR	2	(2PCS/PK)
		28	WEYFLA3JL137	DRIVING SHAFT	1	
		29	WEYFLA1AL007	MOTOR MOUNTING PLATE ASSEMBLY	1	
		30	WEYFLA1AK207	SWITCH ASSEMBLY	1	
		31	WEYFMA2CR207	MODULE ASSEMBLY	1	
		32	WEYFMA2CR278	TRANSMITTER	1	
		33	WEYFLA7AL107	MOTOR ASSEMBLY	1	
		34	WEYFLA1AL297	HARNESS	1	
		35	WEYFMA2CL287	SENSOR LED CIRCUIT ASSEMBLY	1	
		36	WEY7540L2157	BATTERY TERMINAL BLOCK	1	
		37	WEYFME1CL267	BUZZER BOARD	1	
		-	WEY001T8957	FLOIL GREASE	1	
		-	WEY002X8977	GREASE (DOUBREX)	1	

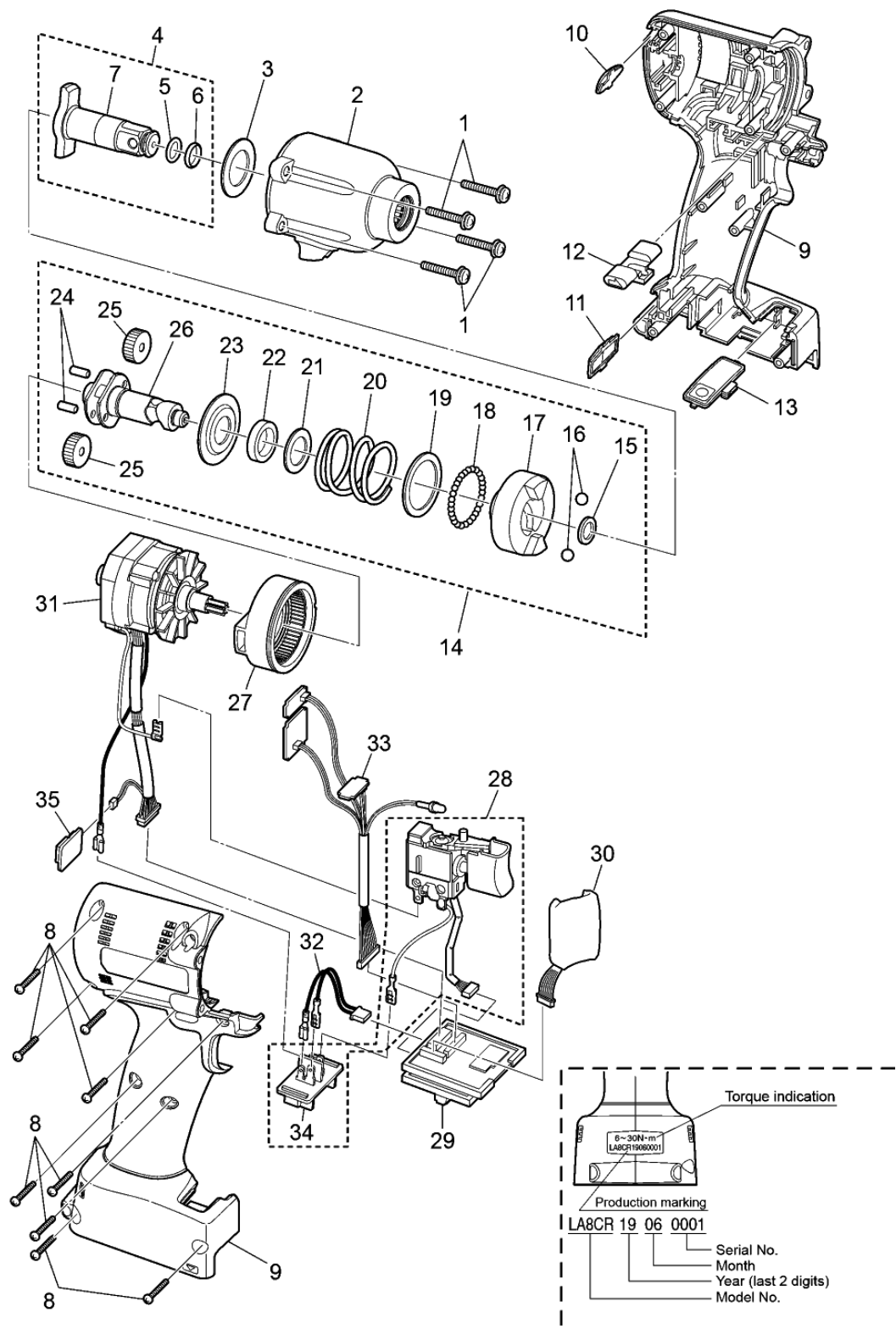
Model No. : EYFLA8AR Exploded View



Model No. : EYFLA8AR Parts List

Change	Safety	Ref. No.	Part No.	Part Name & Description	Q'ty	Remarks
EYFLA8AR						
		1	WEY6507K1166	C-TYPE RING	1	
		2	WEY6507L0856	THRUST PLATE	1	
		3	WEY6507L0196	BIT HOLDER SPRING	1	
		4	WEYFLA1AK379	BIT HOLDER	1	
		5	WEY6507L6976	STEEL BALL	2	(2PCS/PK)
		6	WEYFMA2CK607	DPT SEMS TAPPING SCREW	4	(5PCS/PK)
		7	WEYFLA7AS457	SHAFT COVER ASSEMBLY	1	
		8	WEYFLA7AS047	THRUST PLATE	1	
		9	WEYFLA7AS127	ANVIL	1	
		10	WEYFME1CK967	TAPPING SCREW	9	(5PCS/PK)
		11	WEYFLA8AK309	HOUSING AB SET	1	
		12	WEYFPA1JL377	TIGHTENING CONFIRMATION LAMP COVER	1	
		13	WEYFLA2AL337	DISCERNMENT PLATE	1	
		14	WEYFLA1AK327	F/R SELECTOR HANDLE	1	
		15	WEYFGA1NK337	OPERATION PLATE ASSEMBLY	1	
		16	WEYFLA8AS157	DRIVING SHAFT ASSMBLY	1	
		17	WEYFMA1JL087	THRUST PLATE	1	
		18	WEY7201L6966	STEEL BALL	2	(2PCS/PK)
		19	WEYFLA8AS177	HAMMER	1	
		20	WEY7205L6957	STEEL BALL	29	(29PCS/PK)
		21	WEYFLA1AL087	THRUST PLATE	1	
		22	WEYFLA8AL067	HAMMER SPRING	1	
		23	WEYFLA1AL097	THRUST PLATE	1	
		24	WEYFLA1AL037	CUSHION RUBBER	1	
		25	WEYFLA1AL137	SPRING FIXING PLATE	1	
		26	WEY6506L1346	PIN	2	(2PCS/PK)
		27	WEY6504L1357	PLANET GEAR	2	(2PCS/PK)
		28	WEYFLA3JL137	DRIVING SHAFT	1	
		29	WEYFLA1AL007	MOTOR MOUNTING PLATE ASSEMBLY	1	
		30	WEYFLA1AK207	SWITCH ASSEMBLY	1	
		31	WEYFMA2CR207	MODULE ASSEMBLY	1	
		32	WEYFMA2CR278	TRANSMITTER	1	
		33	WEYFLA7AL107	MOTOR ASSEMBLY	1	
		34	WEYFLA1AL297	HARNESS	1	
		35	WEYFMA2CL287	SENSOR LED CIRCUIT ASSEMBLY	1	
		36	WEY7540L2157	BATTERY TERMINAL BLOCK	1	
		37	WEYFME1CL267	BUZZER BOARD	1	
		-	WEY001T8957	FLOIL GREASE	1	
		-	WEY002X8977	GREASE (DOUBREX)	1	

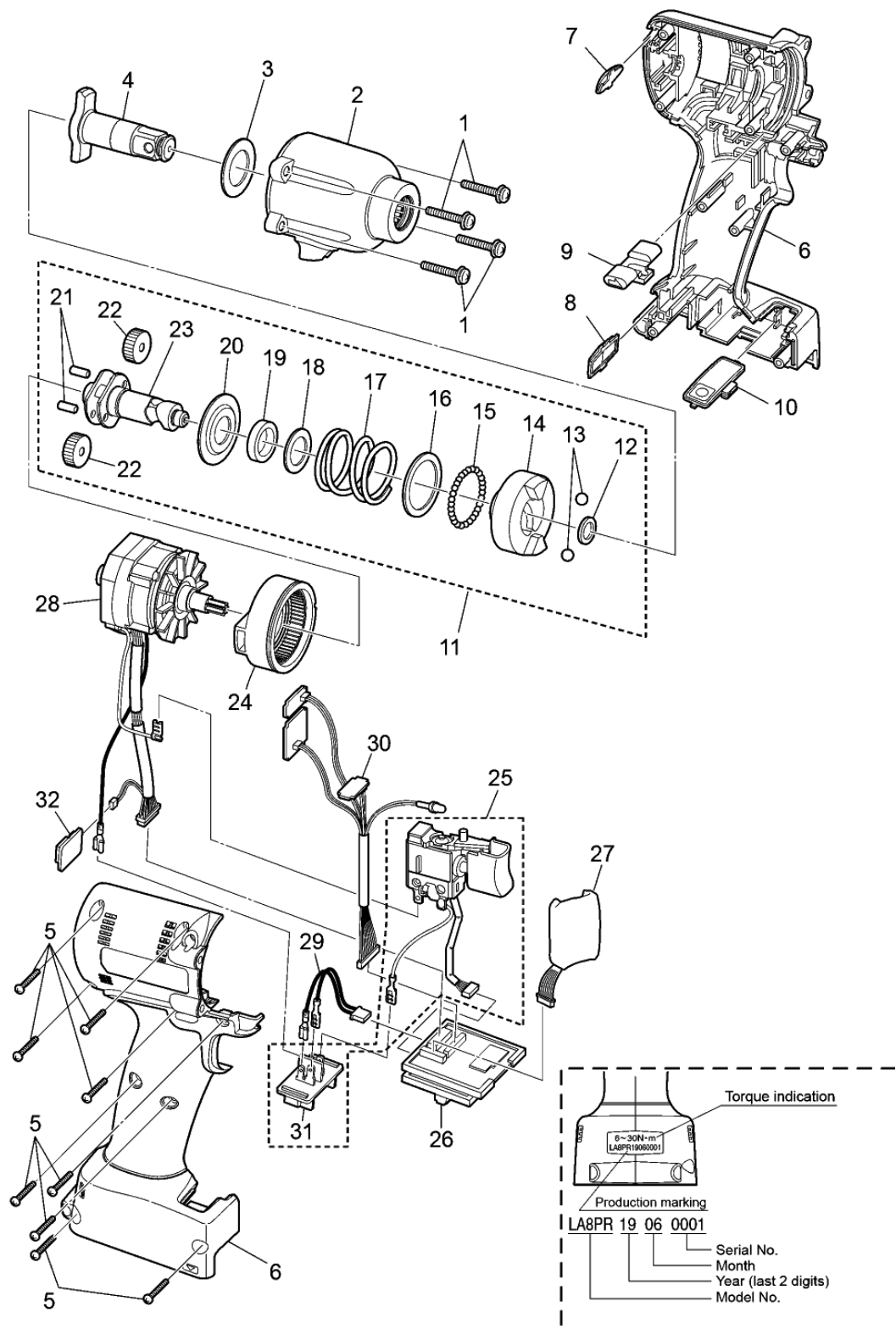
Model No. : EYFLA8CR Exploded View



Model No. : EYFLA8CR Parts List

Change	Safety	Ref. No.	Part No.	Part Name & Description	Q'ty	Remarks
EYFLA8CR						
		1	WEYFMA2CK607	DPT SEMS TAPPING SCREW	4	(5PCS/PK)
		2	WEYFLA7AS457	SHAFT COVER ASSEMBLY	1	
		3	WEYFLA7AS047	THRUST PLATE	1	
		4	WEYFLA8CS127	ANVIL BLOCK	1	
		5	WEYFME1CK087	O-RING	1	
		6	WEYFME1CK077	RETAINER RING	1	
		7	WEYFLA8CS157	ANVIL	1	
		8	WEYFME1CK967	TAPPING SCREW	9	(5PCS/PK)
		9	WEYFLA8CK309	HOUSING AB SET	1	
		10	WEYFPA1JL377	TIGHTENING CONFIRMATION LAMP COVER	1	
		11	WEYFLA2AL337	DISCERNMENT PLATE	1	
		12	WEYFLA1AK327	F/R SELECTOR HANDLE	1	
		13	WEYFGA1NK337	OPERATION PLATE ASSEMBLY	1	
		14	WEYFLA8AS157	DRIVING SHAFT ASSMBLY	1	
		15	WEYFMA1JL087	THRUST PLATE	1	
		16	WEY7201L6966	STEEL BALL	2	(2PCS/PK)
		17	WEYFLA8AS177	HAMMER	1	
		18	WEY7205L6957	STEEL BALL	29	(29PCS/PK)
		19	WEYFLA1AL087	THRUST PLATE	1	
		20	WEYFLA8AL067	HAMMER SPRING	1	
		21	WEYFLA1AL097	THRUST PLATE	1	
		22	WEYFLA1AL037	CUSHION RUBBER	1	
		23	WEYFLA1AL137	SPRING FIXING PLATE	1	
		24	WEY6506L1346	PIN	2	(2PCS/PK)
		25	WEY6504L1357	PLANET GEAR	2	(2PCS/PK)
		26	WEYFLA3JL137	DRIVING SHAFT	1	
		27	WEYFLA1AL007	MOTOR MOUNTING PLATE ASSEMBLY	1	
		28	WEYFLA1AK207	SWITCH ASSEMBLY	1	
		29	WEYFMA2CR207	MODULE ASSEMBLY	1	
		30	WEYFMA2CR278	TRANSMITTER	1	
		31	WEYFLA7AL107	MOTOR ASSEMBLY	1	
		32	WEYFLA1AL297	HARNESS	1	
		33	WEYFMA2CL287	SENSOR LED CIRCUIT ASSEMBLY	1	
		34	WEY7540L2157	BATTERY TERMINAL BLOCK	1	
		35	WEYFME1CL267	BUZZER BOARD	1	
		-	WEY001T8957	FLOIL GREASE	1	
		-	WEY002X8977	GREASE (DOUBREX)	1	

Model No. : EYFLA8PR Exploded View



Model No. : EYFLA8PR Parts List

Change	Safety	Ref. No.	Part No.	Part Name & Description	Q'ty	Remarks
EYFLA8PR						
		1	WEYFMA2CK607	DPT SEMS TAPPING SCREW	4	(5PCS/PK)
		2	WEYFLA7AS457	SHAFT COVER ASSEMBLY	1	
		3	WEYFLA7AS047	THRUST PLATE	1	
		4	WEYFLA8PS127	ANVIL BLOCK	1	
		5	WEYFME1CK967	TAPPING SCREW	9	(5PCS/PK)
		6	WEYFLA8PK309	HOUSING AB SET	1	
		7	WEYFPA1JL377	TIGHTENING CONFIRMATION LAMP COVER	1	
		8	WEYFLA2AL337	DISCERNMENT PLATE	1	
		9	WEYFLA1AK327	F/R SELECTOR HANDLE	1	
		10	WEYFGA1NK337	OPERATION PLATE ASSEMBLY	1	
		11	WEYFLA8AS157	DRIVING SHAFT ASSMBLY	1	
		12	WEYFMA1JL087	THRUST PLATE	1	
		13	WEY7201L6966	STEEL BALL	2	(2PCS/PK)
		14	WEYFLA8AS177	HAMMER	1	
		15	WEY7205L6957	STEEL BALL	29	(29PCS/PK)
		16	WEYFLA1AL087	THRUST PLATE	1	
		17	WEYFLA8AL067	HAMMER SPRING	1	
		18	WEYFLA1AL097	THRUST PLATE	1	
		19	WEYFLA1AL037	CUSHION RUBBER	1	
		20	WEYFLA1AL137	SPRING FIXING PLATE	1	
		21	WEY6506L1346	PIN	2	(2PCS/PK)
		22	WEY6504L1357	PLANET GEAR	2	(2PCS/PK)
		23	WEYFLA3JL137	DRIVING SHAFT	1	
		24	WEYFLA1AL007	MOTOR MOUNTING PLATE ASSEMBLY	1	
		25	WEYFLA1AK207	SWITCH ASSEMBLY	1	
		26	WEYFMA2CR207	MODULE ASSEMBLY	1	
		27	WEYFMA2CR278	TRANSMITTER	1	
		28	WEYFLA7AL107	MOTOR ASSEMBLY	1	
		29	WEYFLA1AL297	HARNESS	1	
		30	WEYFMA2CL287	SENSOR LED CIRCUIT ASSEMBLY	1	
		31	WEY7540L2157	BATTERY TERMINAL BLOCK	1	
		32	WEYFME1CL267	BUZZER BOARD	1	
		-	WEY001T8957	FLOIL GREASE	1	
		-	WEY002X8977	GREASE (DOUBREX)	1	