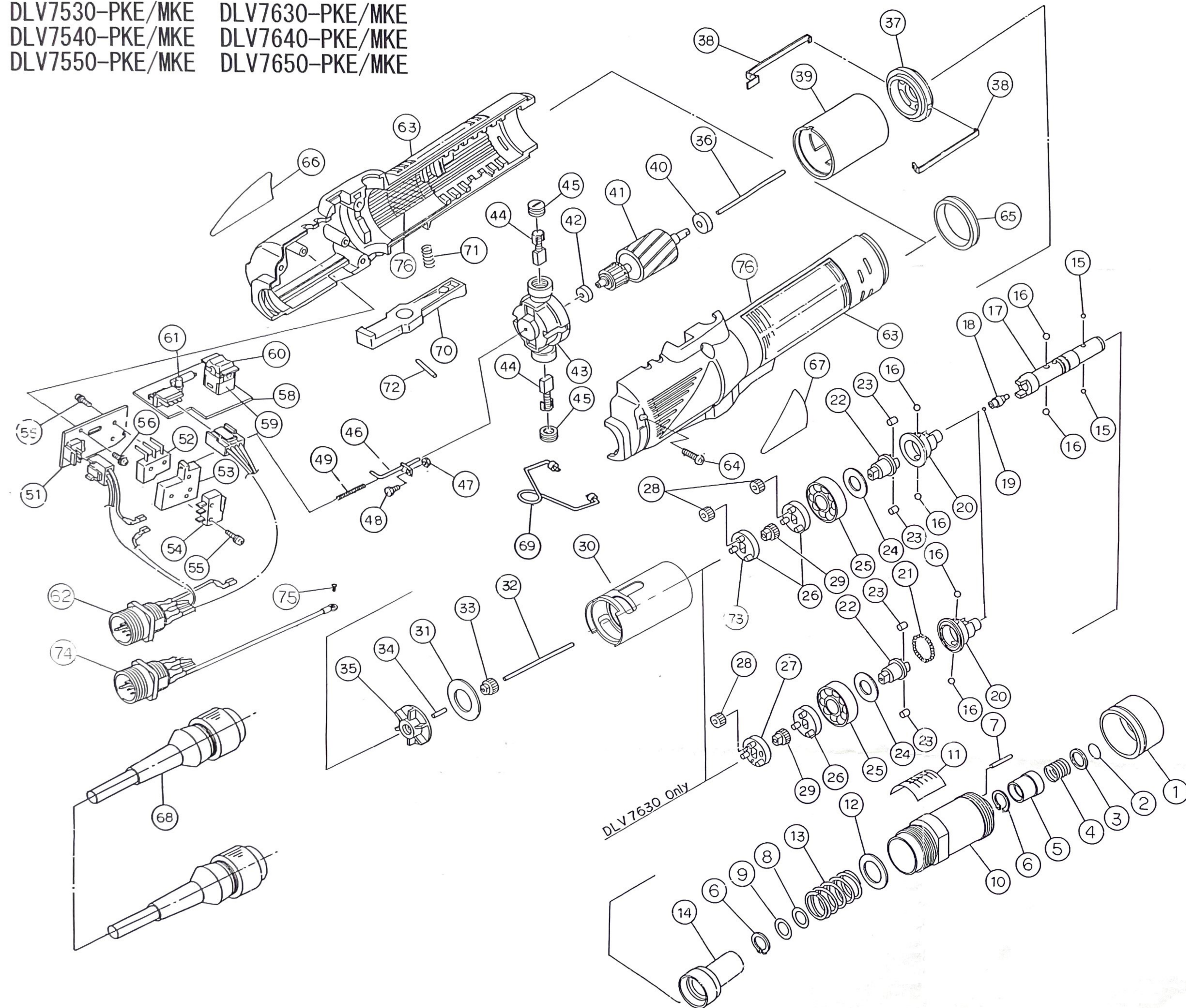




# ELECTRIC SCREW-DRIVER

DLV7530-PKE/MKE DLV7630-PKE/MKE  
 DLV7540-PKE/MKE DLV7640-PKE/MKE  
 DLV7550-PKE/MKE DLV7650-PKE/MKE



No.	PARTS NAME	PARTS No.	No.	PARTS NAME	PARTS No.
1	Spring Adjusting Ring	5461085K	34	Pilot Rod (G)	5461276K
2	Stop Ring	5462316K	35	Fan	
3	Holder Collar	5461051K		for DLV8630	
4	Holder Spring	5461050K		for all others	5461152K
5	Holder Clamp	5461049K	36	Pilot Rod (J)	5462111K
6	Stop Ring	5462712K	37	End Cover (G)	5461012K
7	Roller Pin [ $\phi 2 \times 17.8\text{mm}$ ] ..... (3)	5462735K	38	Assembly Spring	5461096K
8	Shim [thick 0.3mm] ..... (1 or 2)	5462315K	39	Yoke Assembly	5461099K
9	Shim [thick 0.1mm] ..... (1 or 2)	5462312K		for DLV7530/7540/7550	
10	Nose Nut Assembly	5461088A		for DLV7630/7640/7660	5462002K
11	Scale Label	5461089K	40	Ball Bearing	5462008K
12	Plate For Spring	5461030K	41	Rotor Assembly	5461094K
13	Clutch Spring			for DLV7530/7540/7550	
	for DLV7530	5462136K		for DLV7630	5462048K
	for DLV7630	5461042K		for DLV7640/7650	5462049K
	for DLV7540/7640	4032 5464062K	42	Ball Bearing	5462050K
	for DLV7550/7650	5464008K	43	End Cover (R)	5462101K
14	Taper-Ring Assembly		44	Brush Assembly ..... (2)	5461323K
	for DLV7530/7540/7550/7640	5461019A	45	Brush Cap ..... (2)	5461377K
	for DLV7630	5461020A	46	Pilot Rod (D)	5462106K
	for DLV7650	5461019B	47	Nut	5462168K
15	Steel Ball [ $3/32"$ dia] ..... (2)	5462783K	48	Adjusting Screw	5462709K
16	Steel Ball [ $5/32"$ dia] ..... (4)	5462704K	49	Spring for Pilot	5462169K
17	Bit Holder Assembly	5461027A	51	Circuit Board for Micro Switch	5462171K
18	Pilot (A)	5461077K	52	Microswitch (Start)	5461376K
19	Steel Ball [ $1/16"$ dia]	5462705K	53	Plate	5461136K
20	Cam Guide		54	Microswitch (Brake)	5462308K
	for DLV7630	5461023K	55	Screw [ $M2.3 \times 12\text{mm}$ ] ..... (4)	5461120K
	for all others	5461022K	56	Screw [ $M2.3 \times 5\text{mm}$ ] ..... (2)	5462708K
21	Steel Ball [ $2\text{mm}$ dia] ..... (27)	5462703K	58	Circuit Board Assembly for Change-Over Switch	5462729K
22	Cam	5461086K	59	Circuit Board for Change-Over Switch	5461374A
23	Roller Pin [ $\phi 4.5 \times 4.5\text{mm}$ ] ..... (2)	5464701K	60	Change-Over Switch	5461324K
24	Washer		61	LED for Torque-Reach	5461069K
	for DLV8630	5461025K	62	Receptacle Assembly PKE	
	for all others	5461087K	63	Frame (A)	5461321K
25	Ball Bearing	5461035K	64	Screw ..... (3)	5462192K
26	Gear Base (B) Assembly		65	Coupling	5462193K
	for DLV7530/7540/7550 ..... (2)	5461036A		for DLV7550 (Blue)	5462196K
	for DLV7640 ..... (2)	5461036B		for DLV7630 (Red)	5462195K
	for DLV7660 ..... (2)	5461036C		for DLV7640 (Gray)	5462191K
	for DLV7630 ..... (1)	5461036D		for DLV7650 (Yellow)	5462194K
27	Gear Base Assembly	5461036E	66	Rating Label	
28	Idle Gear		67	Warning Label	
	for DLV7530 ..... (6)	5462116K	68	Power Cord Assembly	5461330K
	for DLV7540 ..... (6)	5462202K	69	Lifting Hook Assembly	5462181K
	for DLV7550 ..... (6)	5461093K	70	Trigger	5462313K
	for DLV7630 ..... (3)		71	Spring for Trigger	5462314K
	for DLV7640 ..... (6)	5464508K	72	Trigger Pin [ $\phi 2 \times 17.8\text{mm}$ ]	5462735K
	for DLV7650 ..... (6)	5464513K	26	Gear Base Assembly	
29	Spindle Gear			for DLV7550 ..... (1)	5461036A
	for DLV7530/7630	5461044K	73	Gear Base Assembly	
	for DLV7540	5461045K		for DLV7550 ..... (1)	5461278A
	for DLV7550	5461277K	74	Receptacle Assembly for MKE Type	5461381K
	for DLV7640	5461046K	75	Screw [ $XK2.6 \times 4$ ]	5461333K
	for DLV7650	5461048K	76	Vibration Proof Seal	5461328K
30	Gear Case				
	for DLV7530	5461090K			
	for DLV7540	5461092K			
	for DLV7550/7630/7640/7660	5461091K			
31	Gear Cover	5461302K			
32	Pilot Rod (I)	5461336K			
33	Motor Gear				
	for DLV7530	5461013K			
	for DLV7540	5461014K			
	for DLV7550/7630	5461275K			
	for DLV7640	5461016K			
	for DLV7650	5461017K			

Original drawing OWDL2279c

d) REVISION JAN. 14. 2000  
 c) REVISION JUL. 8. 1999  
 a) REVISION DEC. 19. 1996

THIRD ANGLE DRAWING		NIPPON ELECTRIC INDUSTRY Co.,LTD.	
DIMENSION IN (mm)		TOKYO JAPAN	
SCALE	DRAWING TITLE	PARTS LIST	
DATE NOV. 18. 1996			
ORDER NO.			
APPROVED	CHECKED	DESIGNED	DRAWN
M. Ujii		T. Okamoto	
			DWG NO. OW20590d