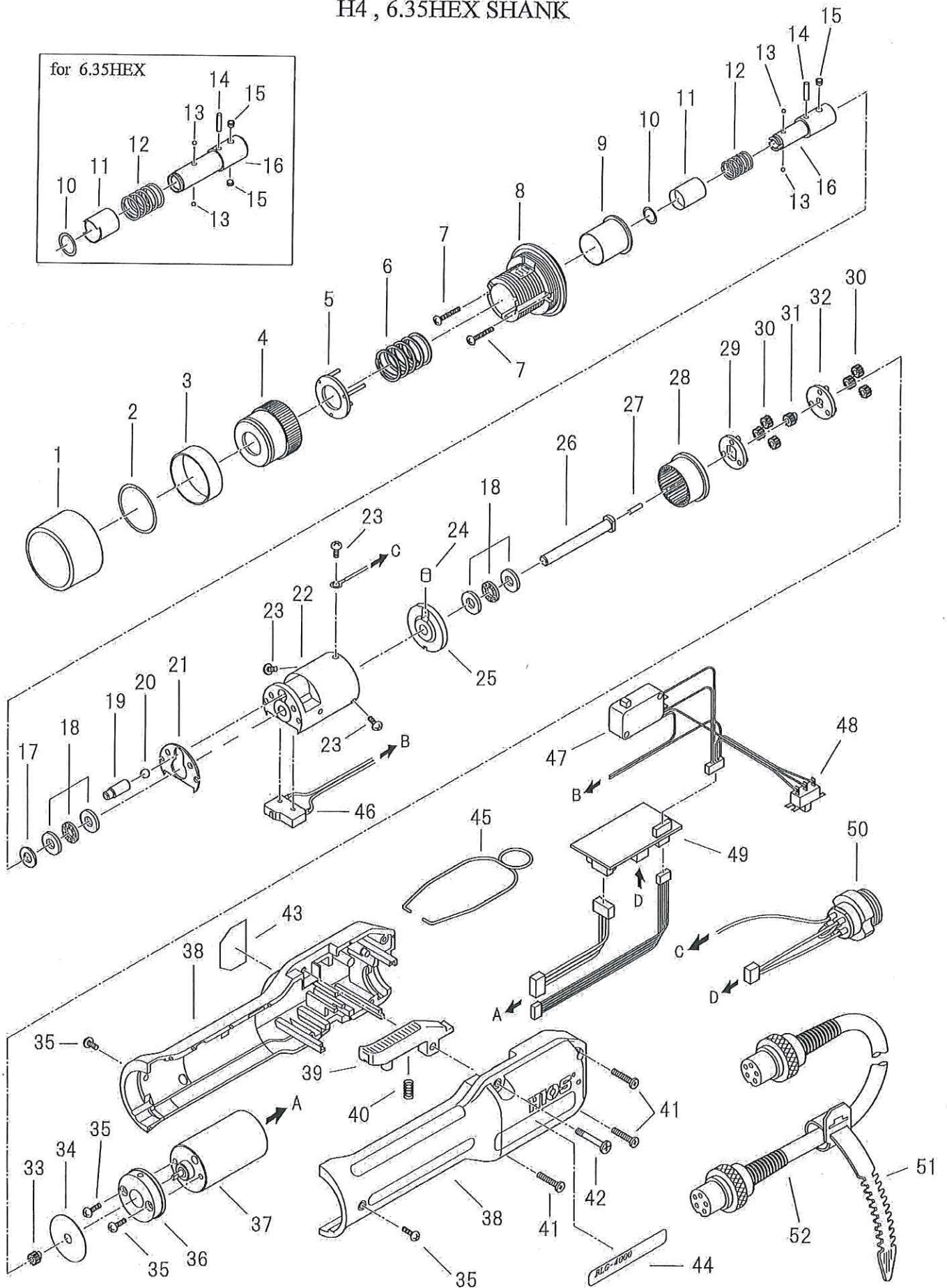


EXPLODED VIEW DRAWING  
 BLG - 4000 / BLG - 4000 - OPC  
 H4 , 6.35HEX SHANK

Issued : 19th.Dec,2013  
 Revised : Jan. 11th, 2017



( Ver No. BLG-40-03 )

**HIOS**

**PARTS LIST OF BLG-4000**  
(HIOS, HEX SHAFT)

17th.DEC.2013  
REVISED: 8th.Dec.2020

PARTS NAME	PARTS NO.	PARTS NAME	PARTS NO.
1 Torque Adjusting Nut Cover	BLG4-0010	<b>Lower Planet Cage Assembly, 29 to 30</b>	_____
<b>Transmission Assembly for HIOS, 2 to 34</b>	<b>BLG4-TM</b>	29 Lower Planet Cage	BLG4-Y0270
<b>Transmission Assembly for HEX, 2 to 34</b>	<b>BLG4X-TM</b>	30 Planet Gear, ( using 6pcs)	BLG4-Y0280
<b>T/A Nut Assembly for HIOS, 2 to 4</b>	<b>BLG4-NT</b>	31 Upper Flower Gear	BLG4-Y0290
<b>T/A Nut Assembly for HEX, 2 to 4</b>	<b>BLG4X-NT</b>	<b>Upper Planet Cage Assembly, 32 to 33</b>	_____
2 Nut Cover Stopper	BLG4-Y0020	32 Upper Planet Cage	BLG4-Y0300
3 Nut Cover	BLG4-Y0030	33 Pinion Gear	BLG4-Y0310
4 Torque Adjusting Nut for HIOS	BLG4-Y0040	34 Grease Seal	BLG4-Y0320
Torque Adjusting Nut for HEX	BLG4X-Y0040	<b>Motor Assy, 35 to 37</b>	<b>BLG4-MT</b>
5 Torque Adjusting Spring Holder for HIOS	BLG4-0050	35 Set Screw 2.6×6 ( 4pcs)	MYPF260603CTMG
Torque Adjusting Spring Holder for HEX	BLG4X-0050	36 Motor Front Panel	BLG4-0330JP
6 Torque Adjusting Spring (RED) 1.5φ	CL4-0060	37 Motor	BLG4-Y0340
Torque Adjusting Spring (WHITE) 1.2φ	BLG4-0070	38 <b>Body Case A&amp;B (set sales only)</b>	
7 Set Screw M2.6×10, 2pcs	MSPF26100NIGP	A	BLG4-Y0350
8 Torque Adjusting Bolt	BLG4-0080	B	BLG4-Y0360
9 Clutch Panel	BLG4-0090	39 Switch Lever	BLG4-0370
Gear Assembly with Joint Shaft(HIOS), 10 to 34	BLG4-GRJ	40 Switch Lever Spring	CL4-0511
Gear Assembly with Joint Shaft(HEX), 10 to 34	BLG4X-GRJ	41 Set Screw, Tapping 2.5×12 (3pcs)	DPTPF25120NITM
10 Collar Stopper for HIOS	BLG4-0100	42 S/W Lever Shaft knob 3×18.5	MSBF301853BTP
Collar Stopper for HEX	CL65-0110	43 Name Plate HIOS	BLG4-0410
11 Joint Shaft Collar for HIOS	BLG4-0110	44 Name Plate BLG-4000	BLG4-0401
Joint Shaft Collar for HEX	BLG4X-0110	45 Hanger	BLG4-0420
12 Collar Spring for HIOS	BLG4-0120	<b>Circuit Assy for BLG-4000, 46 to 50</b>	BLG4-CC1
Collar Spring for HEX	CL65-0130	<b>Circuit Assy for BLG-4000-OPC, 46 to 50</b>	BLG4-CC1-OPC
13 Steel Ball 2.0φ, 2pcs	BALL-02	46 Limit Switch	CL4-0230
14 Joint Shaft Lock Pin 2x9	CL65PS-0150	47 Start Switch	YS-BLG-MS-13AAS1
15 Set Screw 3×2.5, 1pc for HIOS	SH30X025	48 For/Rev Switch	BLG4-0430
2pcs for HEX		49 PCB Assy (Cannot supplied separately)	N/A
16 Joint Shaft for HIOS	N/A	50 5-Pin Metal Connector for BLG-4000	CL4-0580
Joint Shaft for HEX	N/A	6-Pin Metal Connector for BLG-4000-OPC	RD4-0580
17 Washer Φ5.1x10x1.07	BLG4-Y0140	51 Free-up Belt	CL4-0600
18 Thrust Bearing Φ5×11×x4.5, (2pcs)	BLG4-Y0151	52 5-Core Cord W/Connectors In Both Ends	CL4-0611
19 Clutch Ball Rod	BLG4-Y0160	1.5m for BLG-4000	
20 Steel Ball 5.0φ	BALL-05	6-Core Cord W/Connectors In Both Ends	RP50-CL
21 Gear Case Plate	BLG4-Y0170		
22 Gear Case	BLG4-Y0180		
23 Set Screw 2.6×5	MYPF260603CTMG		
24 Cam Roller	BLG4R-0250		
25 Cam Plate	BLG4R-Y0230		
26 Drive Shaft	BLG4-Y0250		
27 Center Pin	BLG4-Y0240		
28 Internal Gear	BLG4-Y0260		