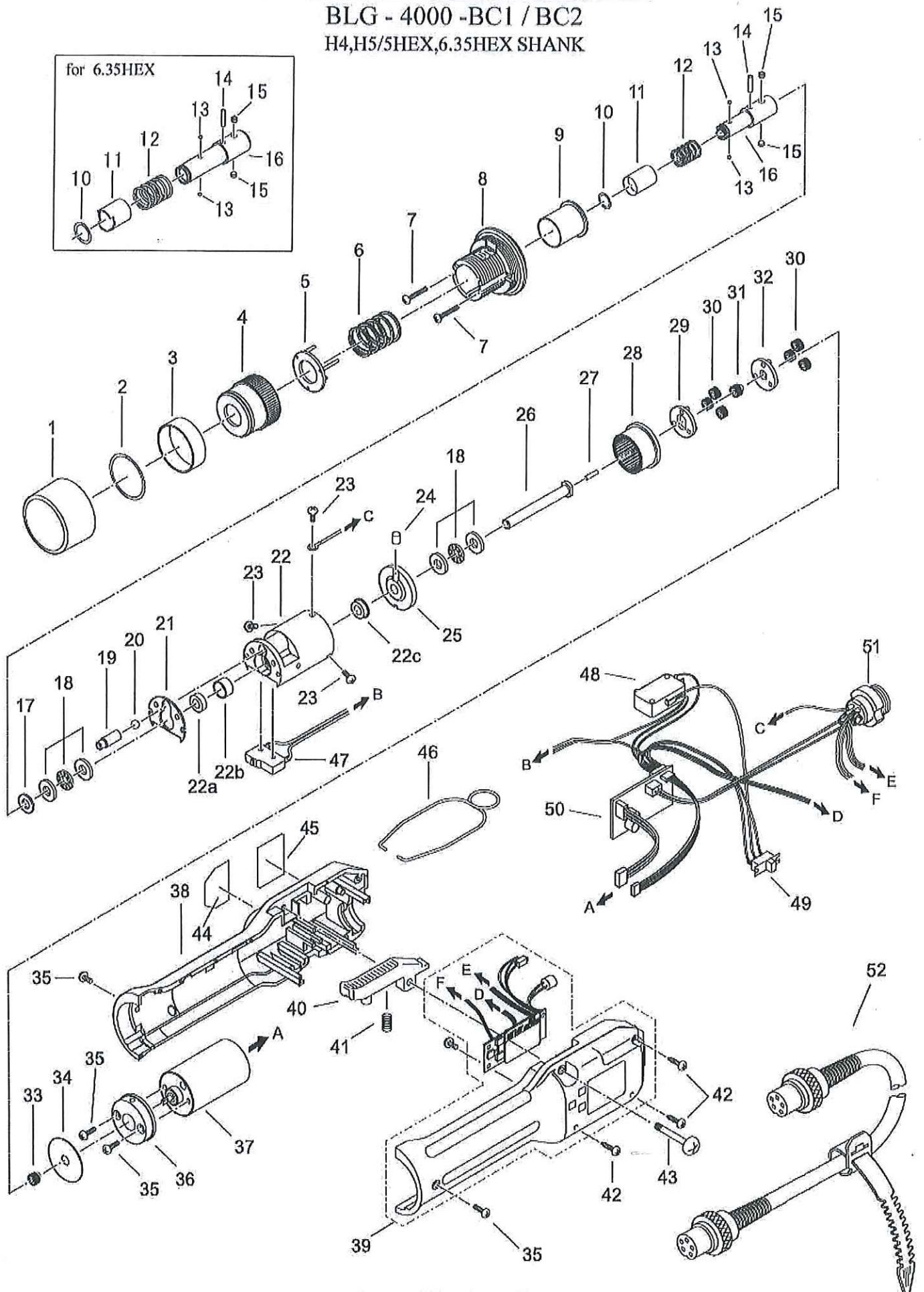


EXPLODED VIEW DRAWING

Issued : 24th.Oct.2013
Revised : 4th.Aug.2015

BLG - 4000 -BC1 / BC2
H4,H5/5HEX,6.35HEX SHANK



(Ver No.BLG4BC1-02)

PARTS LIST OF BLG-4000BC1/BC2
(H OS, HEX SHAFT)

ISSUED: 17th.DEC.2013
REVISED: August,2022

| PARTS NAME | | PARTS NO. | PARTS NAME | | PARTS NO. |
|------------|------------------------------------------------|---------------|------------|---------------------------------------------|---------------------|
| 1 | Torque Adjusting Nut Cover | BLG4-0010 | 23 | Set Screw 2.6x5, 3pcs | MYPF260503CTMG |
| | Transmission Assembly for HIOS, 2 to 34 | BLG4-TM | 24 | Cam Roller | BLG4R-Y0250 |
| | Transmission Assembly for HEX, 2 to 34 | BLG4X-TM | 25 | Cam Plate | BLG4R-Y0230 |
| | | | 26 | Drive Shaft | BLG4-Y0250 |
| | | | 27 | Center Pin | BLG4-Y0240 |
| | | | 28 | Internal Gear | BLG4-Y0260 |
| 2 | Nut Cover Stopper | BLG4-Y0020 | | | |
| 3 | Nut Cover | BLG4-Y0030 | | Lower Planet Cage Assembly, 29 to 30 | _____ |
| 4 | Torque Adjusting Nut for HIOS | BLG4-Y0040 | 29 | Lower Planet Cage | BLG4-Y0270 |
| | Torque Adjusting Nut for HEX | BLG4X-Y0040 | 30 | Planet Gear, 6pcs | BLG4-Y0280 |
| 5 | Torque Adjusting Spring Holder for HIOS | BLG4-0050 | | | |
| | Torque Adjusting Spring Holder for HEX | BLG4X-0050 | 31 | Upper Flower Gear | BLG4-Y0290 |
| 6 | Torque Adjusting Spring (RED) 1.5φ | BLG4-0060 | | | |
| | Torque Adjusting Spring (WHITE) 1.2φ | BLG4-0070 | | Upper Planet Cage Assembly, 32 to 33 | _____ |
| 7 | Set Screw M2.6x10, 2pcs | MSPF26100NIGP | 32 | Upper Planet Cage | BLG4-Y0300 |
| 8 | Torque Adjusting Bolt | BLG4-0080 | 33 | Pinion Gear | BLG4-Y0310 |
| 9 | Clutch Panel | BLG4-0090 | 34 | Grease Seal | BLG4-Y0320 |
| | Gear Assembly with Joint Shaft(HIOS), 10 to 26 | BLG4-GRJ | | Motor Assy, 35 to 37 | BLG4-MT |
| | Gear Assembly with Joint Shaft(HEX), 10 to 26 | BLG4X-GRJ | 35 | Set Screw 2.6x6, 4pcs | MYPF260603CTMG |
| 10 | Collar Stopper for HIOS | BLG4-0100 | 36 | Motor Front Panel | BLG4-0330 |
| | Collar Stopper for HEX | CL65-0110 | 37 | Motor | BLG4-Y0340 |
| 11 | Joint Shaft Collar for HIOS | BLG4-0110 | | | |
| | Joint Shaft Collar for HEX | BLG4X-0110 | | Body Case A&B | (set sales only) |
| 12 | Collar Spring for HIOS | BLG4-0120 | 38 | for BC1 | BLG4-CASEASSY-BC1 |
| | Collar Spring for HEX | CL65-0130 | | for BC2 (NEW) | BLG4-CASEASSY-BC2-W |
| 13 | Steel Ball 2.0φ, 2pcs | BALL-02 | | for BC2 (OLD) | BLG4-CASEASSY-BC2 |
| 14 | Joint Shaft Lock Pin 2x9 | CL65PS-0150 | 40 | Switch Lever | BLG4-0370 |
| 15 | Set Screw 3x2.5, 1pc for HIOS | SH30x025 | 41 | Switch Lever Spring | CL4-0511 |
| | 2pcs for HEX | | 42 | Set Screw, Tapping 2.5x12, 3pcs | DPTPF25120NITM |
| 16 | Joint Shaft for HIOS | BLG4-Y0130 | 43 | Screw 3x18.5 | MSBF301853BTP |
| | Joint Shaft for HEX | BLG4X-Y0130 | 44 | Name Plate HIOS | BLG4-0410 |
| | | | 45 | Name Plate BLG-4000BC1 | BLG4BC1-0020 |
| | | | | Name Plate BLG-4000BC2 | BLG4BC2-0020 |
| 17 | Washer Φ5.1x10x1.07 | BLG4-Y0140 | 46 | Hanger | BLG4-0420 |
| 18 | Thrust Bearing Φ5x11x4.5, 2pcs | BLG4-Y0151 | | | |
| 19 | Clutch Ball Rod | BLG4-Y0160 | | Circuit Assy for BLG-4000, 47 to 50 | |
| 20 | Steel Ball 5.0φ | BALL-05 | | for BC1 | BLG4-CC1-BC1 |
| 21 | Gear Case Plate | BLG4-Y0170 | | for BC2 (NEW) | BLG4-CC1-BC2-W |
| | | | | for BC2 (OLD) | BLG4-CC1-BC2 |
| 22 | Gear Case | BLG4-Y0180 | 47 | Limit Switch | CL4-0230 |
| 22a | Ball bearing | N/A | 48 | Start Switch | CL4-0570 |
| 22b | Collar | N/A | 49 | For/Rev Switch | YS-BLG-MS-13AAS1 |
| 22c | Flange shaped ball bearing | N/A | 50 | PCB Assy (Cannot supplied separately) | N/A |
| | | | 51 | 6-Pin Metal Connector | RD4-0580 |
| | | | 52 | 6-Core Cord W/Connectors In Both Ends | RP50-CL |