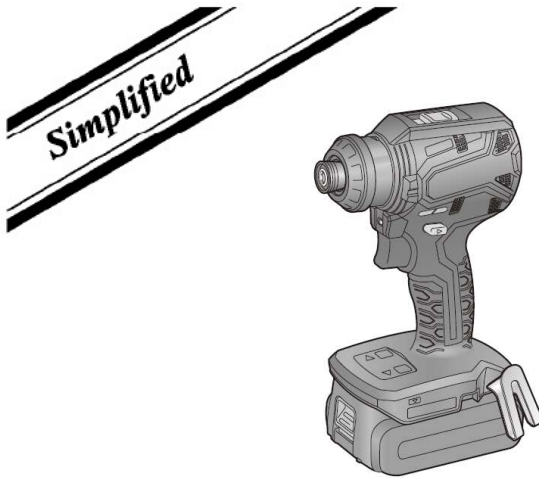


# Service Manual

**Cordless Drill and Driver**

**Model No. EY1DD2**

Europe




Please file and use this manual together with the service manual for Model No. EY1DD2, order No. PTD2205E01CE.

## **WARNING**

This service information is designed for experienced repair technicians only and is not designed for use by the general public. It does not contain warnings or cautions to advise non-technical individuals of potential dangers in attempting to service a product. Products powered by electricity should be serviced or repaired only by experienced professional technicians. Any attempt to service or repair the product or products dealt with in this service information by anyone else could result in serious injury or death.

## **IMPORTANT SAFETY NOTICE**

There are special components used in this equipment which are important for safety. These parts are marked by  in the Schematic Diagrams, Circuit Board Diagrams, Exploded Views and Replacement Parts List. It is essential that these critical parts should be replaced with manufacturer's specified parts to prevent shock, fire or other hazards. Do not modify the original design without permission of manufacturer.

## **TABLE OF CONTENTS**

1. Warning.....	2
2. Specifications.....	2
3. Exploded View and Replacement Parts List.....	3

# 1 Warning

## Caution:

- Pb free solder has a higher melting point than standard solder; Typically the melting point is 50 - 70°F (30 - 40°C) higher. Please use a soldering iron with temperature control and adjust it to 750 ± 20°F (400 ± 10°C). In case of using high temperature soldering iron, please be careful not to heat too long.
- Pb free solder will tend to splash when heated too high (about 1100°F / 600°C).

# 2 Specifications

## NOTE: Weight indication

Greater than or equal to 1 kg: indicated by 0.05 kg.  
Less than 1 kg: indicated by 0.01 kg.

## MAIN UNIT

Model No.		EY1DD2	
Motor voltage		14.4 V DC	18 V DC
No load speed	LOW	Approx. 20 min <sup>-1</sup> – 430 min <sup>-1</sup>	Approx. 20 min <sup>-1</sup> – 530 min <sup>-1</sup>
	HIGH	Approx. 70 min <sup>-1</sup> – 1450 min <sup>-1</sup>	Approx. 70 min <sup>-1</sup> – 1800 min <sup>-1</sup>
Chuck capacity		Φ 1.5 mm – Φ 13 mm	
Clutch torque	LOW	Approx. 3 N•m – 17 N•m	Approx. 3 N•m – 18 N•m
	HIGH	Approx. 3 N•m – 7 N•m	Approx. 3 N•m – 8 N•m
Overall length		160 mm	
Weight	EY9L47	1.52 kg	—
	EY9L49	1.75 kg	—
	EY9L53	—	1.65 kg
	EY9L54	—	1.88 kg
Noise, Vibration		See the included sheet	

## Reference Information.

This product is similar to EY1DD1 with differences in some parts.

The main differences are as follows:

- (1) Gear block assembly (EY1DD2 ➔ bit type).

EY1DD1



EY1DD2

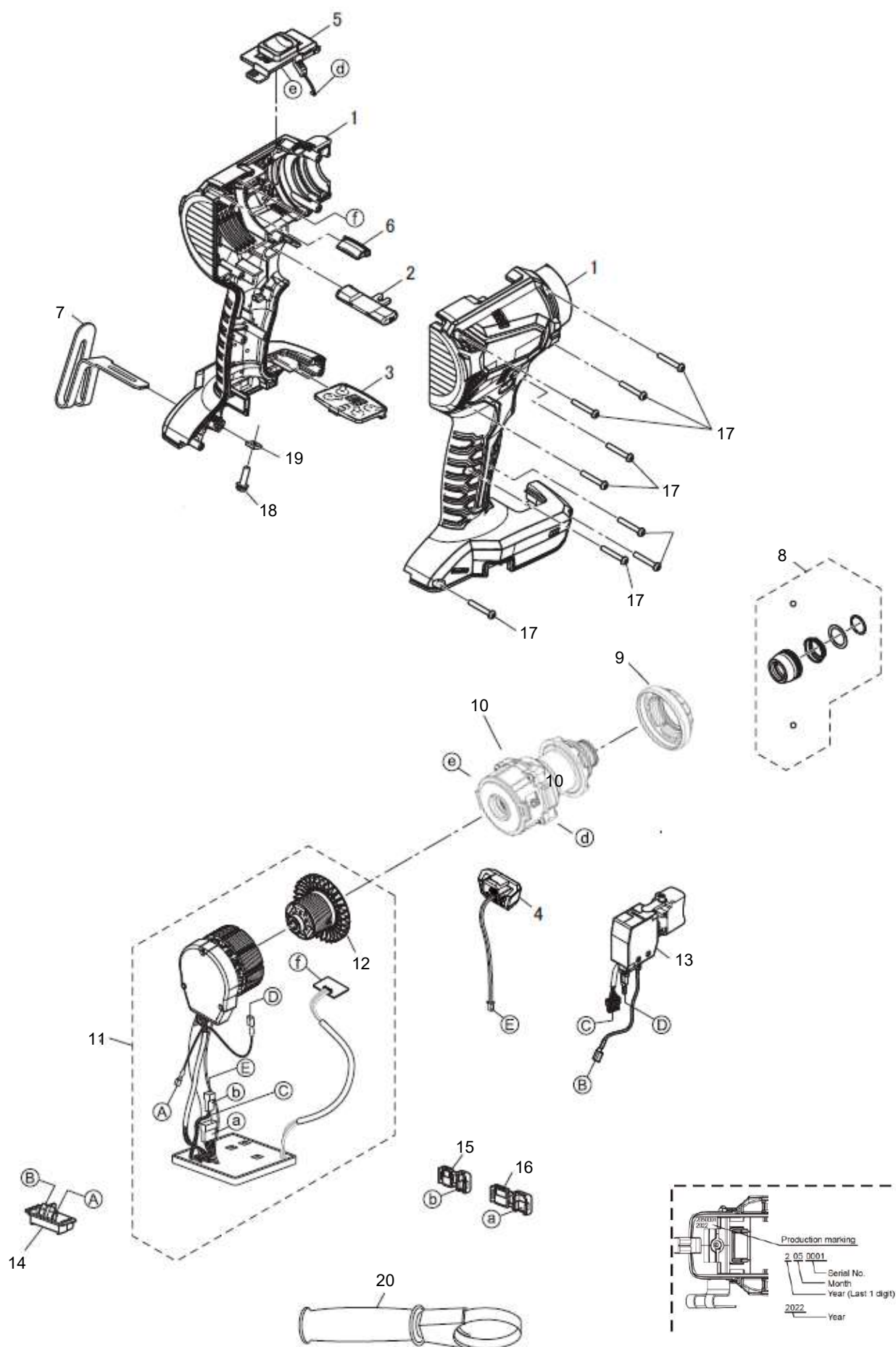


- (2) Housing (different tip shape).

- (3) Protector

### 3 Exploded View and Replacement Parts List

Model No.: EY1DD2 Exploded View



## Model No. : EY1DD2 Parts List

Ref No	Part No.	Part Name & Description	Q'ty	Remarks
1	WEY1DD2K3002	HOUSING AB SET	1	
2	WEY1PD1H3101	F/R SELECTOR HANDLE	1	
3	WEY1DD1L3102	OPERATION PLATE	1	
4	WEY1DD1K3101	LED COVER BLOCK	1	
5	WEY1DD1H3001	H/L CHANGE HANDLE	1	
6	WEY1DD1K3201	LED LIGHTGUIDE	1	
7	WEY7543K3187	PLATE HOOK	1	
8	WEY1PD1L1001	BIT HOLDER SET	1	
9	WEY1DD2K3101	PROTECTOR	1	
10	WEY1DD2L1101	GEAR BLOCK ASSEMBLY	1	
11	WEY1DD1L2101	MOTOR ASSEMBLY	1	
12	WEY1DD1L2201	ROTOR ASSEMBLY	1	
13	WEY75A8L2007	SWITCH ASSEMBLY	1	
14	WEY75A7K2157	BATTERY TERMINAL ASSEMBLY	1	
15	WEY75A8W3117	CONNECTOR COVER 2P	1	
16	WEY75A8W3127	CONNECTOR COVER 6P	1	
17	WEY6230K9216	TORX TAPPING SCREW	9	(K3*20)
18	WEY7441K6217	SCREW	1	(K4*14)
19	WEY7441L6487	NUT	1	(M4)
20	WEY1DD1F7001	SUPPORT HANDLE	1	
-	WEY1DD1L8002	OPERATING INSTRUCTIONS	1	
-	WEY004X8967	CALFOREX	1	
-	WEY001T8907	GREASE (ALVANIA)	1	
-	WEY7543X5517	GREASE (SUMITEC)	1	